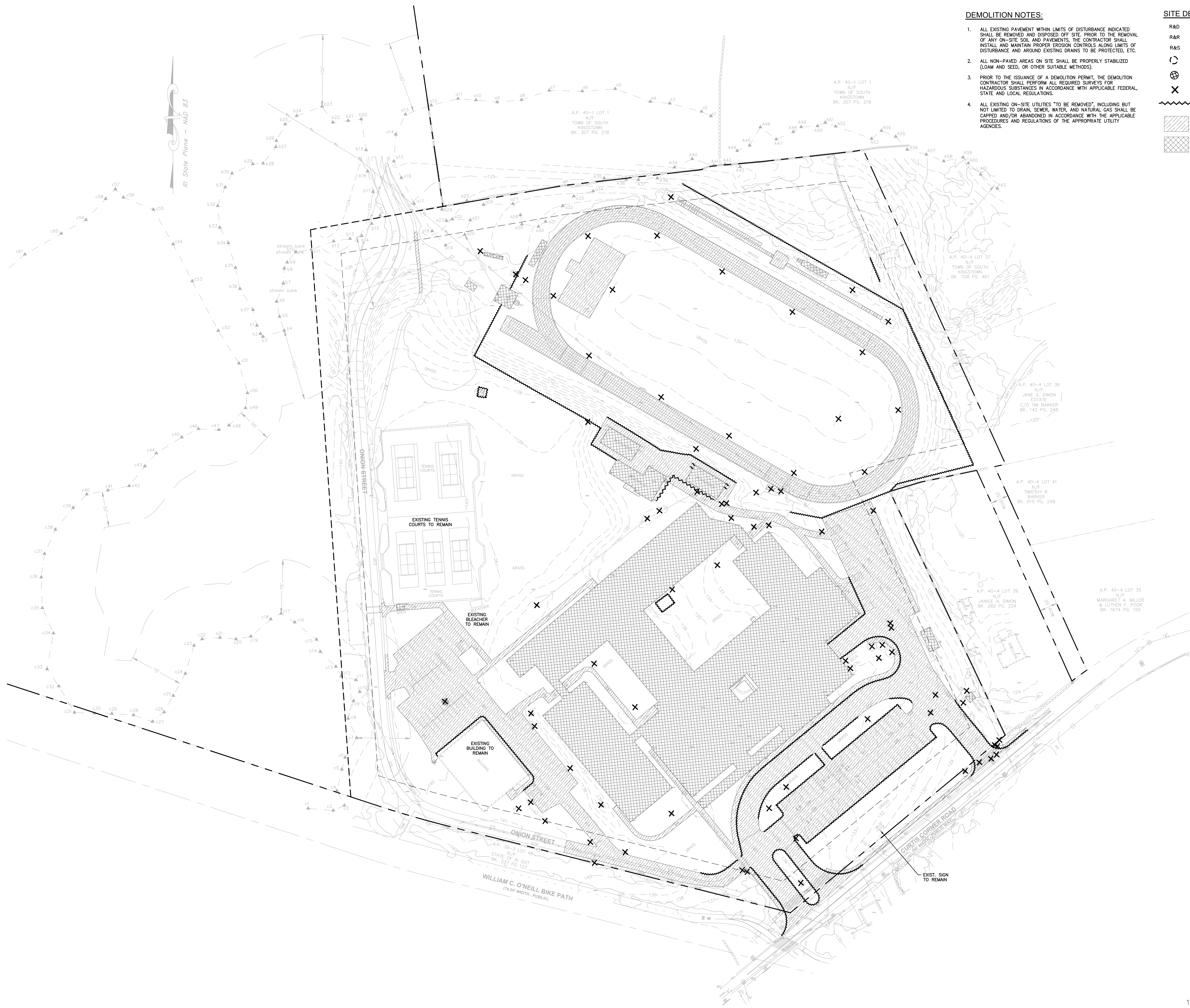


THE RECEIVER OF THESE PLANS HEREBY CERTIFIES THAT THE INFORMATION CONTAINED HEREIN IS TRUE AND CORRECT TO THE BEST OF HIS KNOWLEDGE AND BELIEF. THE RECEIVER WILL DEFEND AND HOLD HARMLESS THE ARCHITECT AND ENGINEER FROM AND AGAINST ALL CLAIMS, DAMAGES, LOSSES AND EXPENSES, INCLUDING REASONABLE ATTORNEY'S FEES, ARISING OUT OF OR RESULTING FROM THE USE OF THESE PLANS FOR ANY PURPOSE. THE RECEIVER WARRANTS THAT HE WILL NOT REPRODUCE OR OTHERWISE MAKE USE OF THE DATA OR PLANS OR ANY ENGINEERING OR ARCHITECTURAL INFORMATION CONTAINED HEREIN FOR ANY OTHER PROJECT WITHOUT THE WRITTEN CONSENT OF THE ARCHITECT AND ENGINEER. THE RECEIVER'S OBLIGATION IS LIMITED TO THE PROJECT AND THE INFORMATION CONTAINED HEREIN. THE RECEIVER'S OBLIGATION IS LIMITED TO THE PROJECT AND THE INFORMATION CONTAINED HEREIN. THE RECEIVER'S OBLIGATION IS LIMITED TO THE PROJECT AND THE INFORMATION CONTAINED HEREIN.

10/7/2024 10:59 AM



DEMOLITION NOTES:

- ALL EXISTING PAVEMENT WITHIN LIMITS OF DISTURBANCE INDICATED SHALL BE REMOVED AND DISPOSED OFF SITE. PRIOR TO THE REMOVAL OF ANY ON-SITE SOIL AND PAVEMENTS, THE CONTRACTOR SHALL INSTALL AND MAINTAIN PROPER EROSION CONTROLS ALONG LIMITS OF DISTURBANCE AND AROUND EXISTING DRAINS TO BE PROTECTED, ETC.
- ALL NON-PAVED AREAS ON SITE SHALL BE PROPERLY STABILIZED (LOAM AND SEED, OR OTHER SUITABLE METHODS).
- PRIOR TO THE ISSUANCE OF A DEMOLITION PERMIT, THE DEMOLITION CONTRACTOR SHALL PERFORM ALL REQUIRED SURVEYS FOR HAZARDOUS SUBSTANCES IN ACCORDANCE WITH APPLICABLE FEDERAL, STATE AND LOCAL REGULATIONS.
- ALL EXISTING ON-SITE UTILITIES TO BE REMOVED, INCLUDING BUT NOT LIMITED TO DRAIN, SEWER, WATER, AND NATURAL GAS SHALL BE CAPPED AND/OR ABANDONED IN ACCORDANCE WITH THE APPLICABLE PROCEDURES AND REGULATIONS OF THE APPROPRIATE UTILITY AGENCIES.

SITE DEMOLITION LEGEND

- R&D REMOVE & DISPOSE
- R&R REMOVE & RELOCATE
- R&S REMOVE & SALVAGE
- ☉ TREE PROTECTION
- ⊗ INLET PROTECTION
- ✕ REMOVE & DISPOSE SITE FEATURE
- ~~~~~ REMOVE & DISPOSE LINEAR FEATURES
- ▨ PAVEMENT/SIDEWALK TO BE REMOVED
- ▩ BUILDING TO BE REMOVED

STUDIOJAED
 ARCHITECTS ■ ENGINEERS ■ FACILITIES SOLUTIONS
 PROVIDENCE OFFICE
 42 WYBRISSET STREET,
 PROVIDENCE, RHODE ISLAND 02903
 P: (401) 532-1652
 F: (401) 532-0864
 MARYLAND OFFICE
 237 FROWN STREET, P.O.
 CHAMPTON, MARYLAND
 21626
 DELAWARE OFFICE
 2500 WYMANVILLE ROAD,
 BEAR, DELAWARE 19701
 P: (302) 832-1652
 F: (302) 832-0864
 Website: www.studiojaed.com
 Email: info@studiojaed.com

GROFALO
 GANOFALO & ASSOCIATES, INC.
 CIVIL & STRUCTURAL ENGINEERS \ SURVEYORS
 LAND PLANNERS \ ENVIRONMENTAL SCIENTISTS
 65 COLLIS STREET
 P.O. BOX 145
 PROVIDENCE, RI 02940
 (PH) 401-273-6000 (FX) 401-273-1000

THIS DRAWING IS THE PROPERTY OF STUDIOJAED, AND IS PREPARED FOR THE EXCLUSIVE USE OF ITS CLIENTS AT THE LOCATION INDICATED. NO OTHER USE IS AUTHORIZED OR INTENDED.

THE PROFESSIONAL SERVICES OF THE ARCHITECT ARE UNDERTAKEN FOR AND ARE PERFORMED IN THE INTEREST OF NAME OF PERSON EMPLOYING ARCHITECT. NO CONTRACTUAL OBLIGATION IS ASSUMED BY THE ARCHITECT FOR THE BENEFIT OF ANY OTHER PERSON INVOLVED IN THE PROJECT.

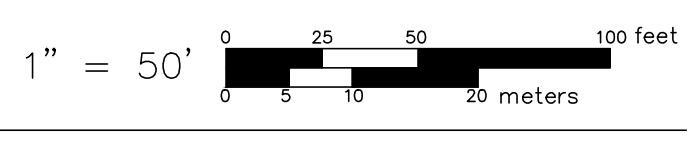
SIGNATURE:
 DATE OF SIGNATURE:
 DATE OF REGISTRATION EXPIRATION:
 ARCHITECT / ENGINEER SEAL

PROJECT
**TOWN OF SOUTH KINGSTOWN
 NEW CONSTRUCTION
 AT THE
 CURTIS CORNER ATHLETIC CAMPUS**
 301 CURTIS CORNER ROAD
 SOUTH KINGSTOWN, RI 02879

REVISIONS		
MARK	DESCRIPTION	DATE

SHEET TITLE
DEMOLITION PLAN

SCHMATIC DESIGN
 10-01-2024
 DRAWN CHK'D PROJECT NO
 KJA SSH 7458.1
 SHEET NO.
C-2



THIS DRAWING IS THE PROPERTY OF STUDIOJAED AND IS PREPARED FOR THE EXCLUSIVE USE OF ITS CLIENTS AT THE LOCATION INDICATED. NO OTHER USE IS AUTHORIZED OR INTENDED.

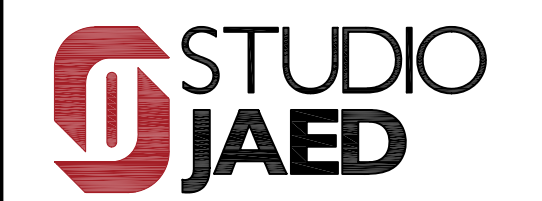
GENERAL DEMOLITION NOTES

- CONTRACTOR TO PERFORM A DETAILED COMPREHENSIVE RISK ASSESSMENT HAS BEEN CONDUCTED FOR ALL ACTIVITIES RELATED TO THE DEMOLITION WORK AND HAS BEEN SHARED WITH ALL TRADES.
- A FULL-TIME SUPERVISOR/SUPERINTENDENT HAS BEEN APPOINTED AND IS PRESENT AT THE WORKSITE.
- ALL PERSONNEL INVOLVED IN DEMOLITION WORK HAVE BEEN INFORMED OF ASSOCIATED HAZARDS AND ALL NECESSARY PRECAUTIONARY MEASURES SEE ASBESTOS ABATEMENT PLAN IN SPECIFICATIONS.
- CONTRACTOR SHALL ADEQUATELY BARRICADE AND SECURE THE SITE WITH CLEAR SIGNAGE IN PLACE. CONTRACTOR SHALL FURNISH AND INSTALL MEASURES TO PREVENT UNAUTHORIZED ENTRY.
- COVERED WALKWAYS OR OTHER MEANS OF OVER-HEAD PROTECTION SHALL BE PROVIDED.
- CATCH PLATFORMS SHALL BE PROVIDED AND MAINTAINED WHERE EXTERIOR MASONRY WALL OR ROOFS ARE BEING DEMOLISHED.
- ALL GLASS AND CLADDING TO THE EXTERIOR OF THE BUILDING TO BE DEMOLISHED HAVE BEEN REMOVED PRIOR TO COMMENCEMENT OF DEMOLITION BY THE CONTRACTOR.
- CONTRACTOR TO ENSURE THAT ALL GAS, ELECTRIC, WATER, STEAM AND OTHER SUPPLY LINES HAVE BEEN SHUT OFF AND CAPPED.
- OPEN SIDES OR OPENINGS WHERE A PERSON IS LIABLE TO FALL MORE THAN 6 FEET ARE COVERED OR GUARDED BY EFFECTIVE GUARDRAILS, BARRIERS OR OTHER EQUALLY EFFECTIVE MEANS TO PREVENT FALL.
- CONTRACTOR SHALL PROVIDE SAFE MEANS OF ACCESS AND EGRESS FROM DIFFERENT LEVELS OF BUILDINGS OR STRUCTURES.
- TRAFFIC LOADING PLAN BEING PROPERLY IMPLEMENTED, INCLUDING ENFORCEMENT OF ESTABLISHED HAUL ROUTES AND AN ADEQUATE NUMBER OF FLAGMEN AND SPOTTERS BEING PROVIDED, FIGURES AND/OR AERIAL PHOTOGRAPHS PROVIDED.
- SUFFICIENT AND SUITABLE LIGHTING SHALL BE PROVIDED IN ALL WORK AREAS.
- CONFIRMATION SAMPLING FOR ASBESTOS CONTAINING MATERIAL (ACM) SHALL BE CONDUCTED IN ADVANCE OF DEMOLITION. SEE ASBESTOS ABATEMENT PLAN IN SPECIFICATIONS.
- IF ACM DETECTED ABATEMENT HAS BEEN COMPLETED UNDER THE SUPERVISION OF ENVIRONMENTAL MONITORS. AREA CLEARED FOR WORK. SEE ASBESTOS ABATEMENT PLAN IN SPECIFICATIONS. SEE ASBESTOS ABATEMENT PLAN IN SPECIFICATIONS.
- FUGITIVE DUST IN WORK AREA AND PERIMETER BEING MONITORED AND DOCUMENTED BY QUALIFIED ENVIRONMENTAL CONSULTANT.
- ACM PROPERLY DISPOSED OF WITH LOAD MANIFESTS TO A LICENSED RECEIVING FACILITY. SEE ASBESTOS ABATEMENT PLAN IN SPECIFICATIONS.
- IF LEAD DETECTED ABATEMENT HAS BEEN COMPLETED UNDER THE SUPERVISION OF ENVIRONMENTAL MONITORS. AREA CLEARED FOR WORK. SEE ASBESTOS ABATEMENT PLAN IN SPECIFICATIONS.
- LBP PROPERLY DISPOSED OF WITH LOAD MANIFESTS TO A LICENSED RECEIVING FACILITY.
- SUITABLE HEARING PROTECTION PROVIDED TO ALL PERSONS EXPOSED TO EXCESSIVE NOISE.
- ABATEMENT MEASURES BEING IMPLEMENTED TO MINIMIZE IMPACT TO ADJACENT DPW OPERATIONS. SEE ASBESTOS ABATEMENT PLAN IN SPECIFICATIONS.
- PERSONAL PROTECTIVE EQUIPMENT IS PROVIDED TO ALL PERSONNEL WHICH REQUIRES PROTECTION, INCLUDING EYE PROTECTION, FALL PROTECTION, FOOT PROTECTION, HAND PROTECTION, HEAD PROTECTION, HEARING PROTECTION, RESPIRATORY PROTECTION.
- DEBRIS ON THE FLOORS, AGAINST HOARDINGS OR EXTERNAL WALLS, OR AT ANY PART OF THE WORKSITE NOT BE ALLOWED TO ACCUMULATE SO AS TO CONSTITUTE A HAZARD.
- OPENINGS USED FOR REMOVAL OF DEBRIS, EXCEPT THE TOP OR WORKING FLOOR, ARE ENCLOSED FROM FLOOR TO CEILING. IF AN ENCLOSURE CANNOT BE PROVIDED, EFFECTIVE BARRICADES SHALL BE PROVIDED AT 20' FROM THE OPENINGS.
- A WARNING NOTICE INDICATING FALLING DEBRIS HAS BEEN PLACED AT THE DEBRIS COLLECTION AREA.
- DEMOLITION OF WALLS AND PARTITIONS IN A WORKSITE SHALL PROCEED IN A SYSTEMATIC MANNER. ALL WORK ABOVE EACH TIER OF FLOOR BEAMS HAS BEEN COMPLETED BEFORE THE REMOVAL OF ITS SUPPORTS.
- DEMOLITION SEQUENCE ESTABLISHED. DROP ZONES FOR MATERIALS PUSHED FROM UPPER LEVELS PROPERLY DEMARCATED, MAINTAINED, SECURED, AND NON-ESSENTIAL PERSONNEL KEPT AWAY.
- NO STRUCTURE OR PART OF STRUCTURE WHICH IS BEING DEMOLISHED ARE LEFT IN SUCH A CONDITION THAT IT MAY FALL OR COLLAPSE INADVERTENTLY, OR BE WEAKENED DUE TO WIND PRESSURE, VIBRATION OR OTHER CAUSES.
- WHERE ANY DEMOLITION WORK IS CARRIED OUT WITH THE USE OF HAND TOOLS, SAFE FOOTINGS IN THE FORM OF SOUND FLOORING OR SCAFFOLDS ARE PROVIDED FOR PERSONS WORKING ON AN EXTERIOR WALL.
- WHERE ANY DEMOLITION WORK IS CARRIED OUT WITH THE USE OF HAND TOOLS, THERE ARE NO WALLS OR PARTITIONS THAT ARE LEFT STANDING MORE THAN 1 STORY ABOVE THE UPPERMOST FLOOR WHERE PERSONS ARE WORKING.
- STAGING/STOCKPILING OF RUBBLE AND RECYCLABLE MATERIALS BEING PROPERLY MANAGED AND SECURED FOR EVENTUAL LOADING AND TRANSPORT.
- SIZING AND SEGREGATION OF MATERIALS BEING CONDUCTED IN A SAFE MANNER.
- LABORERS PARTICIPATING IN SIZING AND SEGREGATION MAINTAINING PROPER PROXIMITY AND COMMUNICATION WITH HEAVY EQUIPMENT OPERATORS.
- LABORERS PARTICIPATING IN SIZING AND SEGREGATION PROVIDED WITH AND UTILIZING PROPER PPE INCLUDING SUITABLE GLOVES FOR HANDLING OF FRAGMENTED MATERIALS SUCH AS BRICKS, CONCRETE RUBBLE, REBAR, WOOD, AND GLASS.
- ALL OPENINGS AND ELEVATED FREE EDGES ARE PROPERLY GUARDED.
- ANY TEMPORARY BRACING, SHORING, OR PROPPING IS TIGHT, STABLE SECURE, AND WAS REVIEWED BY COMPETENT PERSONNEL.
- ALL HAZARDOUS SUBSTANCES HAVE BEEN REMOVED FROM THE WORKING LEVEL.
- ALL EMERGENCY ACCESS AND EGRESS ROUTES ARE CLEAR OF DEBRIS AND PROPERLY MARKED.
- DAILY HEALTH AND SAFETY TALKS MEETING CONDUCTED AND DOCUMENTED.
- HOT-WORK SAFETY MEASURES IN PLACE.
- ADEQUATE DUST SUPPRESSION MEASURES IN USE.
- OFF-SITE TRACKING BEING MITIGATED BY USE OF SHAKER PLATES AND/OR STREET SWEEPER.
- DEBRIS LOADED PROPERLY AND COVERED AS NEEDED. TRUCKS CHECKED FOR LOOSE OR DANGLING MATERIALS BEFORE DEPARTURE.
- IF MULTIPLE EQUIPMENT IS USED DURING INTERIOR GUTTING, MINIMUM DISTANCE PER FLOOR LOAD-BEARING CAPACITY CALCULATIONS BEING MAINTAINED.
- PROPER SAFETY MEASURES FOR COMPRESSED GAS INCLUDING PROTECTIVE GEAR AND SAFETY PROCEDURES.
- POWER, WATER, PHONE, CABLE AND ANY OTHER UTILITY OR AGENCY AFFECTED BY THE DEMOLITION SHALL BE CONSULTED. OVERHEAD WIRING SHALL BE PROPERLY ADDRESSED.
- COMPLETE AN ASSESSMENT OF THE BUILDING BY A STRUCTURAL ENGINEER TO DETERMINE STRUCTURAL SYSTEMS AND ANY SPECIAL CONDITIONS AFFECTING DEMOLITION SHALL BE CONDUCTED PRIOR TO DEMOLITION AND SUBMITTED TO THE DEPARTMENT FOR REVIEW.
- A DEMOLITION SET-UP INSPECTION SHALL BE MADE PRIOR TO THE ACTUAL DEMOLITION TO DETERMINE IF ANY SPECIAL CONDITIONS EXIST.
- FLOT PLANS AND CONSTRUCTION DETAILS (IF APPLICABLE) SHALL BE SUBMITTED WITH THE PERMIT APPLICATION.
- DURING THE DEMOLITION ALL PEDESTRIAN AND VEHICULAR TRAFFIC SHALL BE DIRECTED BY STRATEGICALLY LOCATED FLAGMEN. ALL PEDESTRIAN TRAFFIC SHALL BE RE-ROUTED; VEHICULAR TRAFFIC WILL BE STOPPED COMPLETELY IF CONDITIONS DEEM NECESSARY.
- ANY CLOSURE OF CITY RIGHTS-OF-WAY (SIDEWALKS, STREETS, ALLEYS, ETC.) SHALL REQUIRE ISSUANCE OF AN ENCROACHMENT PERMIT FROM THE CITY.
- THE WORK OF DEMOLISHING ANY BUILDING SHALL NOT BE COMMENCED UNTIL THE REQUIRED PEDESTRIAN PROTECTION STRUCTURES ARE IN PLACE PER THE INTERNATIONAL BUILDING CODE.
- PEDESTRIAN PROTECTION SHALL CONFORM TO THE REQUIREMENT OF THE INTERNATIONAL BUILDING CODE.
- NO FREE-STANDING WALLS WILL BE ALLOWED.
- NON-BEARING EXTERIOR WALLS SHALL BE TAKEN DOWN TO A SAFE LEVEL BEFORE BEARING WALLS ARE REMOVED.
- ROOF AND FLOOR DIAPHRAGMS SHALL BE REMOVED ONLY TO THE EXTENT NEEDED TO FREE THE WALLS BELOW FOR IMMEDIATE DEMOLITION.
- WALLS SHALL BE FEATHERED BACK AT A 45 DEGREE ANGLE BEFORE WORK IS HALTED.
- DUST CONTROL SHALL BE MAINTAINED AT ALL TIMES TO THE SATISFACTION OF THE CITY.
- ALL ADJACENT STRUCTURES MUST BE ADEQUATELY PROTECTED.
- THE HIGHEST STANDARDS OF WORKMANSHIP AND SAFETY SHALL BE MAINTAINED THROUGHOUT THE JOB.
- WHEN ANY UNSAFE CONDITIONS ARE ENCOUNTERED, WORK SHALL BE HALTED, THE STRUCTURE SECURED, AND THE CITY NOTIFIED IMMEDIATELY.
- SANITARY SEWER SERVICE LATERALS SHALL BE CAPPED AND LABELED. INSPECTOR MUST SEE CAPS BEFORE COVERING.
- ALL PUBLIC IMPROVEMENTS SHALL BE REPAIRED AS PER THE CITY.
- AFTER DEMOLITION IS COMPLETED, THE SITE SHALL BE LEFT IN A SAFE, CLEAN, AND SANITARY CONDITION, INSURING THAT ALL FOUNDATIONS, DEBRIS, CONSTRUCTION MATERIALS, FURNISHINGS, TRASH, GARBAGE, ETC. ARE COMPLETELY REMOVED.
- IF IT BECOMES NECESSARY TO FILL IN ANY OF THE EXCAVATIONS, IT SHALL BE DONE WITH FILL MEETING THE STANDARDS AS SET FORTH IN THE INTERNATIONAL BUILDING CODE. FILL SHALL BE CERTIFIED BY A LICENSED ENGINEER AS TO ITS PROPER COMPACTION PER THE INTERNATIONAL BUILDING CODE.
- ANY DEMOLITION OCCURRING IN THE DOWNTOWN CORE MUST BE GIVEN SPECIAL ATTENTION AS TO HOW THE SITE WILL BE LEFT.
- DEMOLITION CONTRACTOR SHALL CARRY THE CITY AS A RIDER ON THEIR INSURANCE POLICY FOR AN AMOUNT TO BE DETERMINED.
- ALL SIGNS TO CONTROL TRAFFIC IN THE PUBLIC STREETS AND RIGHTS-OF-WAY SHALL CONFORM TO THE REQUIREMENTS AS DEFINED BY THE CITY.
- A MINIMUM OF TWO (2) WATER HOSES SHALL BE REQUIRED FOR DUST CONTROL. ONE OF WHICH SHALL BE A MINIMUM OF ONE AND ONE HALF INCH (1-1/2") FIRE HOSE WITH A VARIABLE FOG NOZZLE OR EQUIVALENT.
- DISCONNECT ELECTRICAL SERVICE. REMOVE PROPANE TANKS.
- MARK EASEMENTS AND UNDERGROUND UTILITIES.
- IDENTIFY/REMOVE/DISPOSE OF ASBESTOS, LEAD-BASED PAINT AND OTHER HAZARDOUS MATERIALS PER STATE ENVIRONMENTAL AGENCY/EPA REQUIREMENTS. SEE ASBESTOS ABATEMENT PLAN IN SPECIFICATIONS.
- IDENTIFY/REMOVE/DISPOSE OF ALL HHW PER STATE ENVIRONMENTAL AGENCY/EPA REQUIREMENTS.
- RECORD GPS COORDINATES, PHOTOGRAPH SITE BEFORE AND AFTER DEMOLITION.
- DOCUMENT ACTUAL DEMOLITION AND REMOVAL OF DEBRIS.

DEMOLITION KEY NOTES

- D-01** DEMOLISH AND DISPOSE OF EXISTING BUILDING IN ITS ENTIRETY. DEMOLITION INCLUDES, BUT IS NOT LIMITED TO, EXISTING WALLS AND OTHER PARTITIONS, STEEL STRUCTURE, CONCRETE SLAB-ON-GRADE, CONCRETE FOUNDATIONS BELOW GRADE, EQUIPMENT, CASEWORK, FLOOR FINISHES, ROOFING, HVAC, PLUMBING, AND ELECTRICAL SYSTEMS.
- D-02** DEMOLISH AND DISPOSE OF EXISTING CONCRETE SLAB IN ITS ENTIRETY AND EXCAVATE AS REQ'D. TO REMOVE ALL EXISTING UNDERSLAB PIPING AND ELECTRICAL CONDUIT.
- D-03** DEMOLISH AND DISPOSE OF EXISTING STEEL STRUCTURE IN ITS ENTIRETY, INCLUDING BUT NOT LIMITED TO, EXISTING COLUMNS, FOOTINGS, JOISTS, LINTELS, MISC. STEEL FRAMING, SUPPORTS, ETC.
- D-04** DEMOLISH AND DISPOSE OF EXISTING HVAC EQUIPMENT IN ITS ENTIRETY, INCLUDING BUT NOT LIMITED TO, EXISTING ROOF TOP UNITS, EXHAUST FANS, DUCT WORK, HANGERS, DIFFUSERS, RETURNS, UNIT VENTILATORS, ETC.
- D-05** DEMOLISH AND DISPOSE OF EXISTING PLUMBING FIXTURES IN THEIR ENTIRETY, INCLUDING BUT NOT LIMITED TO, EXISTING VENTS, PIPING, TRAPS, FIXTURES, AND HANGERS.
- D-06** DEMOLISH AND DISPOSE OF EXISTING ELECTRICAL AND TELECOMMUNICATIONS EQUIPMENT IN ITS ENTIRETY, INCLUDING BUT NOT LIMITED TO, EXISTING WIRING, DEVICES, HANGERS, AND CONDUIT.

This drawing is the property of StudioJAED and is prepared for the exclusive use of its clients at the location indicated. No other use is authorized or intended.



CONSULTANT

THIS DRAWING IS THE PROPERTY OF STUDIOJAED AND IS PREPARED FOR THE EXCLUSIVE USE OF ITS CLIENTS AT THE LOCATION INDICATED. NO OTHER USE IS AUTHORIZED OR INTENDED.

ARCHITECT / ENGINEER SEAL

PROJECT

**TOWN OF SOUTH KINGSTOWN
SOUTH KINGSTOWN PUBLIC SCHOOLS
BUILDING DEMOLITION**

AT

CURTIS CORNER MIDDLE SCHOOL
301 CURTIS CORNER ROAD,
WAKEFIELD, RI 02879

REVISIONS

MARK	DESCRIPTION	DATE

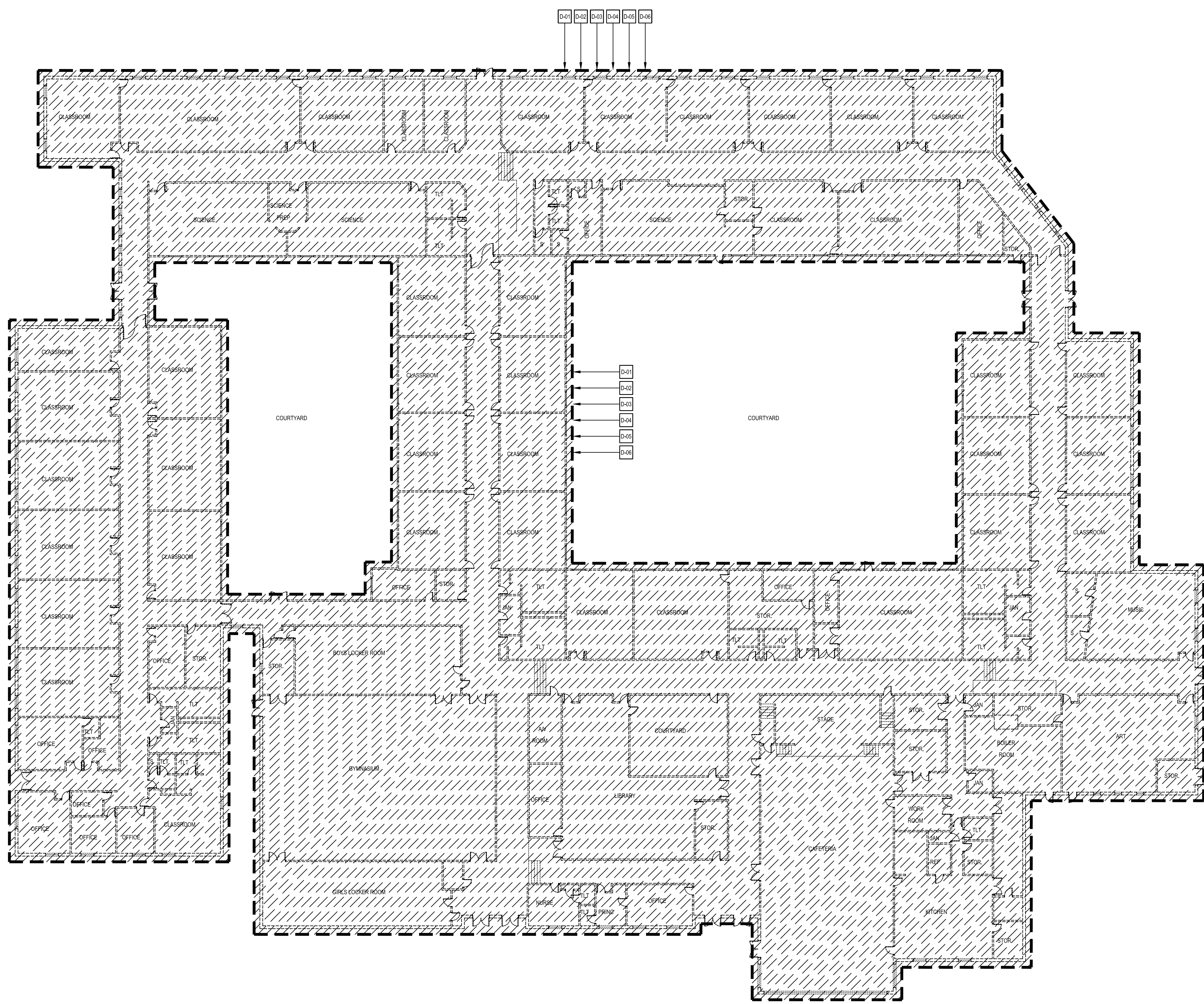
SHEET TITLE

DEMOLITION FLOOR PLAN

SCHEMATIC
DESIGN
OCTOBER 2024

DRAWN	CHKD	PROJECT NO.
BMS	PRC	24030
SHEET NO.		

AD101



1 FIRST FLOOR DEMOLITION PLAN
AD101 SCALE: 1/16" = 1'-0"

Narratives of Design

Demolition:

1. Curtis Corner Middle School, located at 301 Curtis Corner Road, Wakefield, Rhode Island, is a 1-story building, 99,697 SF in size, built in 1964.
2. The demolition of Curtis Corner Middle School involves the removal of the entire existing facility, including all associated structures, utilities, and site elements.
3. The purpose of this demolition is to clear the site for future redevelopment. The existing middle school comprises parking areas, athletic fields, and site features, which must be carefully and safely removed in accordance with all regulatory requirements and minimize impacts on the surrounding community and environment.
4. Scope of work includes demolition of outdoor facilities such as parking lots, fields, and associated site improvements.
5. Removal of sidewalks, driveways, and site lighting within the project boundary.
6. Demolition includes the removal of associated utility connections, including electrical, plumbing, HVAC systems, stormwater management infrastructure, and telecommunications.
7. Project includes safe removal of all hazardous materials (e.g., asbestos, lead paint) in accordance with environmental regulations.
8. The middle school facility consists of a combination of structural systems, including steel framing, concrete foundations, and masonry walls.
9. Utility services, including water, sewer, gas, electrical, and communications lines, are connected to the site. These services will need to be identified, disconnected, and safely terminated prior to demolition.
10. The facility is assumed to contain asbestos-containing materials (ACMs) and lead-based paint (LBP). A full hazardous material survey will be conducted prior to demolition.
11. The school is located within a residential district. Adjacent properties will require protection from noise, dust, and debris during demolition activities.
12. A detailed survey of the existing utilities, and site to be conducted prior to demolition. This includes marking all utility disconnections and ensuring compliance with local permitting requirements.
13. All identified hazardous materials to be removed and properly disposed of before structural demolition begins.
14. Temporary fencing, signage, and barriers to be erected to secure the site and protect the public. Measures for dust control and noise mitigation to be implemented.
15. Demolition will proceed in phases to ensure safe and efficient removal of structures. The sequence is anticipated to start with abatement, interior demolition, followed by exterior structural demolition, and finally, foundation and utility removal.

September 30, 2024

16. All debris will be sorted for recycling. Waste materials will be transported off-site in accordance with local regulations for proper disposal.
17. All utilities will be disconnected by coordinating with the appropriate service providers. Utility lines running beneath or around the building footprint will be excavated and removed or capped as necessary.
18. Once all structures and utilities are removed, the site to be graded to a smooth, level condition. Erosion control measures, such as silt fencing, to be installed to prevent runoff and sedimentation during site stabilization. Temporary grass cover or other stabilization measures to be applied to prevent soil erosion.
19. Water trucks to be used to minimize airborne dust during demolition.
20. Demolition activities will be restricted to specific hours of operation to minimize disturbance to surrounding areas.
21. A waste management plan will ensure that demolition waste is properly sorted, recycled, or disposed of in an environmentally responsible manner.
22. Temporary fencing and signage to restrict unauthorized access to the site. Adjacent pedestrian and vehicle traffic routes to be monitored, and detours or alternate paths to be provided as necessary.
23. The demolition is to comply with all local, state, and federal regulations, including environmental protection laws and construction permits. Regular inspections will be conducted by local authorities and third-party inspectors to ensure compliance throughout the project.
24. The demolition of Curtis Corner Middle School is anticipated to occur early in the overall construction sequence (as early as January / February 2025) and take approximately 3-5 months, depending on weather conditions, regulatory approval timelines, and unforeseen site conditions.

END