



# South Kingstown School District

RIDE Stage I Update  
September 8, 2022

# Agenda

RIDE Stage I Description

Activities Completed to Date

Data Gathering & Summary of Data

Trending Facility Needs & Demographics

Submission of RIDE Stage I

Next Steps

# RIDE Stage I Description

- Required for Housing Aid Reimbursement
- SKSD Housing Aid 35 % (Incentives may be available)
- Stage I “the Need” (September 15<sup>th</sup> Submission)
  - **Identifies Facility Needs**
  - **Not** a commitment to a particular Project
  - **Not** a commitment to Bond
- Stage II “the Solutions”

# Activities Completed to Date

- Facility Condition Assessments
- Principal Interviews & Surveys
- Educational Adequacy Assessment
- Data Gathering & Engagement
  - Public & School Community

*“We have incredible potential in this district. We have dedicated teachers and wonderful students. Our facilities are horrible.”*

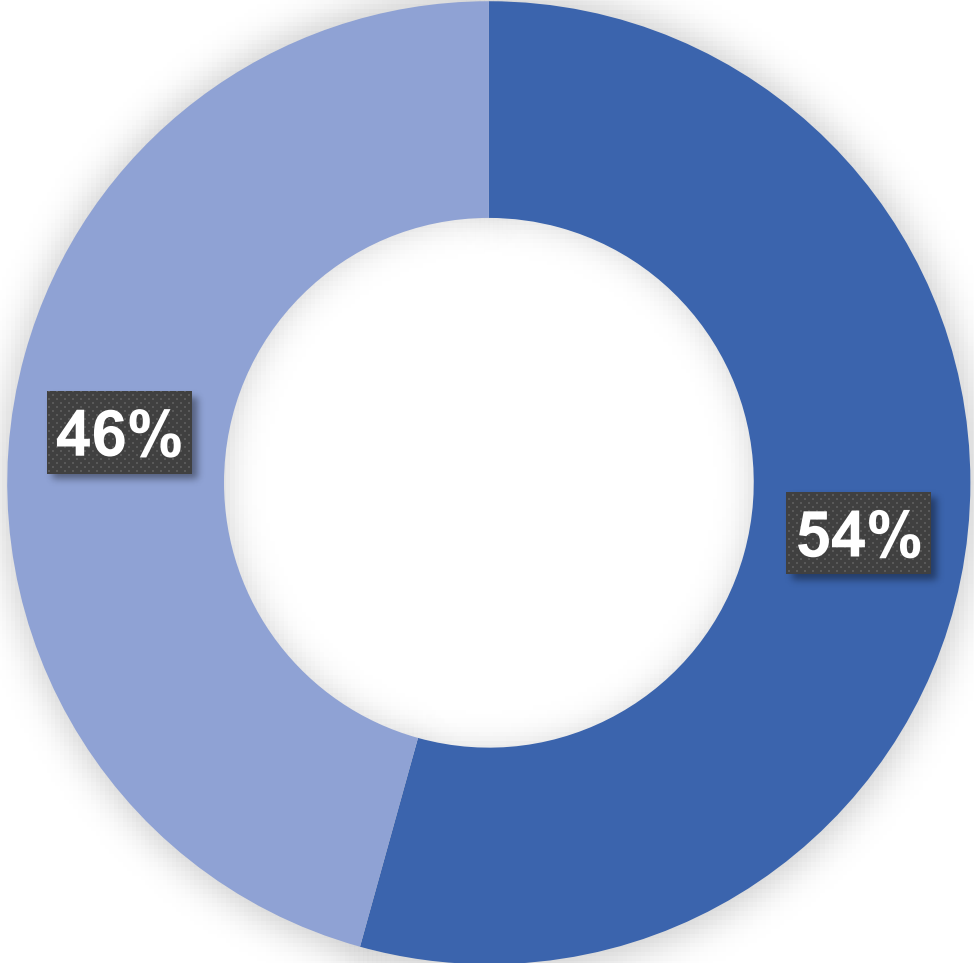
# Data Gathering

- Survey
  - Over 650 Participants
  - Results are included in the Stage I
  - Reflected a divided community
  - United behind a common goal

*“Unless you address the state of the facilities immediately, you will continue to lose families - including ours.”*

# Data Gathering - Survey

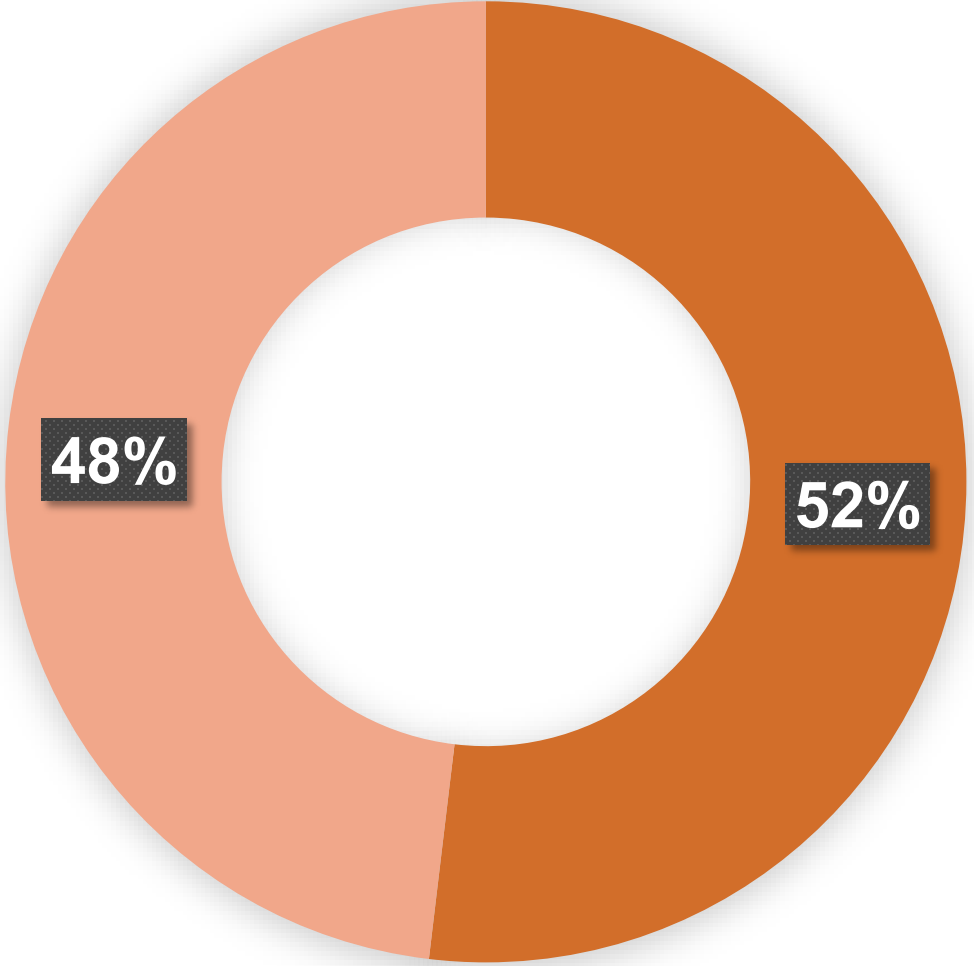
Is SK appropriately supporting students social and emotional needs in the school system?



- Yes
- No

# Data Gathering - Survey

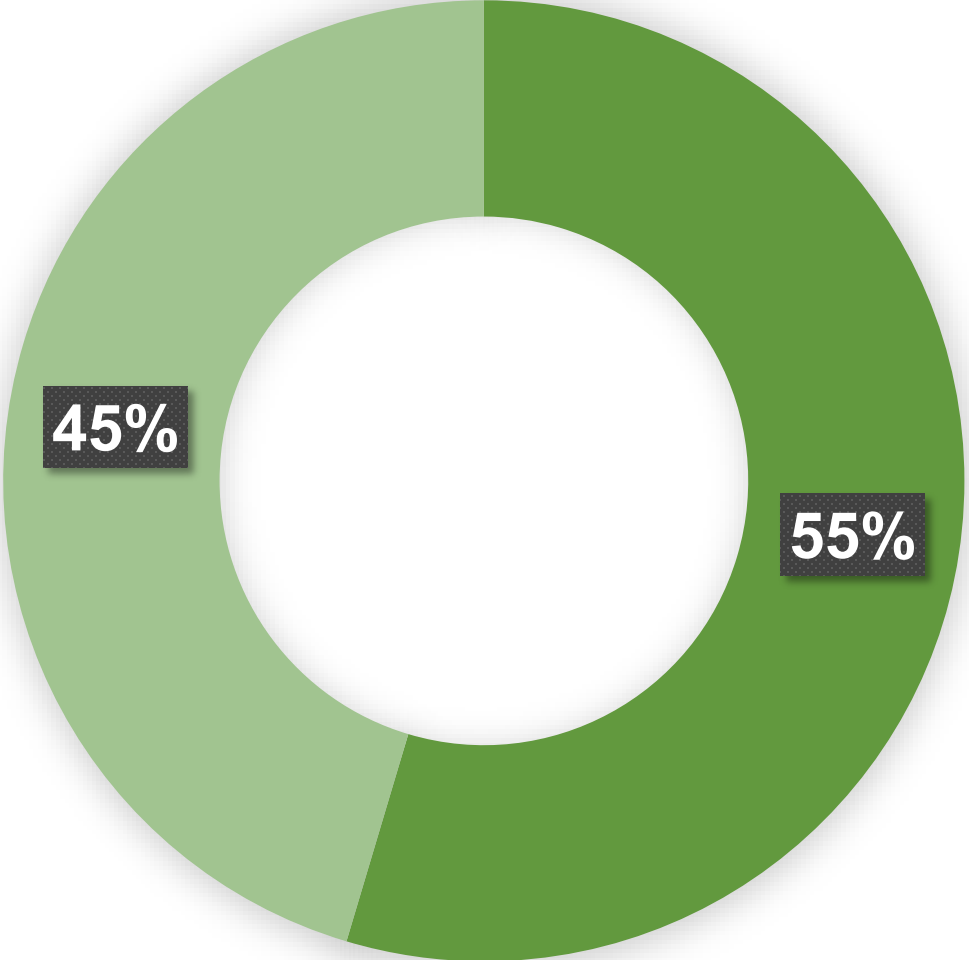
Is the SK School District engaging students in ways that will keep them interested in school?



- Yes
- No

# Data Gathering - Survey

Is the SK School District preparing students for real world opportunities?

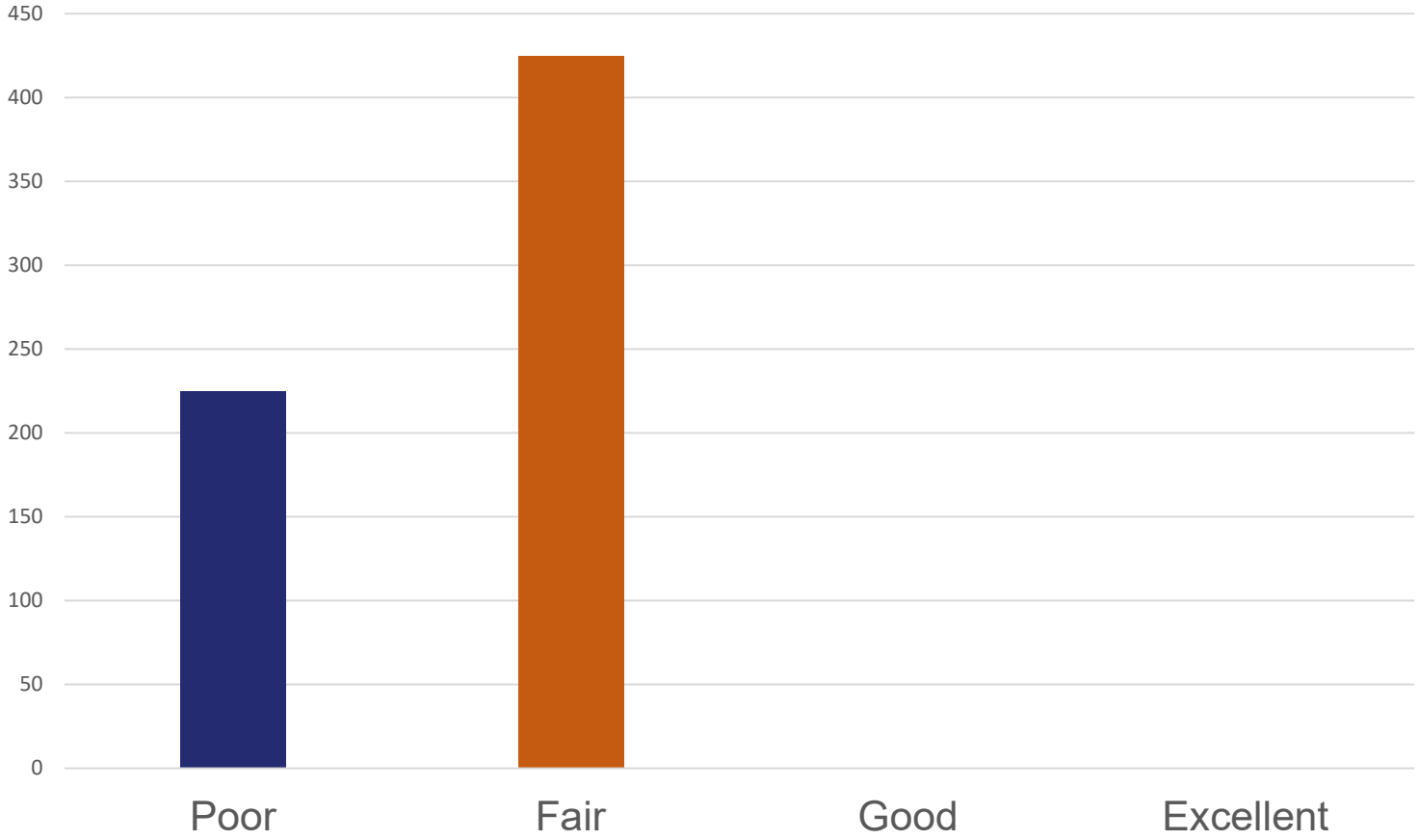


- Yes
- No



# Data Gathering - Survey

Please rate South Kingstown school facilities from 1 being *Poor* – 4 being *Excellent*



*“The schools are safe, warm and dry but they look old, worn and shabby.”*



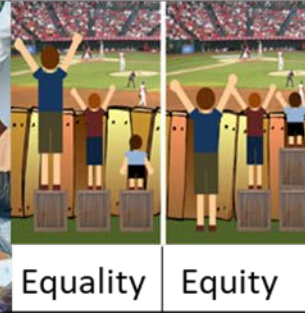




# Data Gathering

- Forums
  - District Wide
  - School Specific
- Educator “klatches”
  - Every School
- Progress Presentations
  - School Committee

*“The high school could be and should be the flagship school. Our academics, art and sports teams are top notch. Facilities are broken. Leaving us all feeling broken too.”*

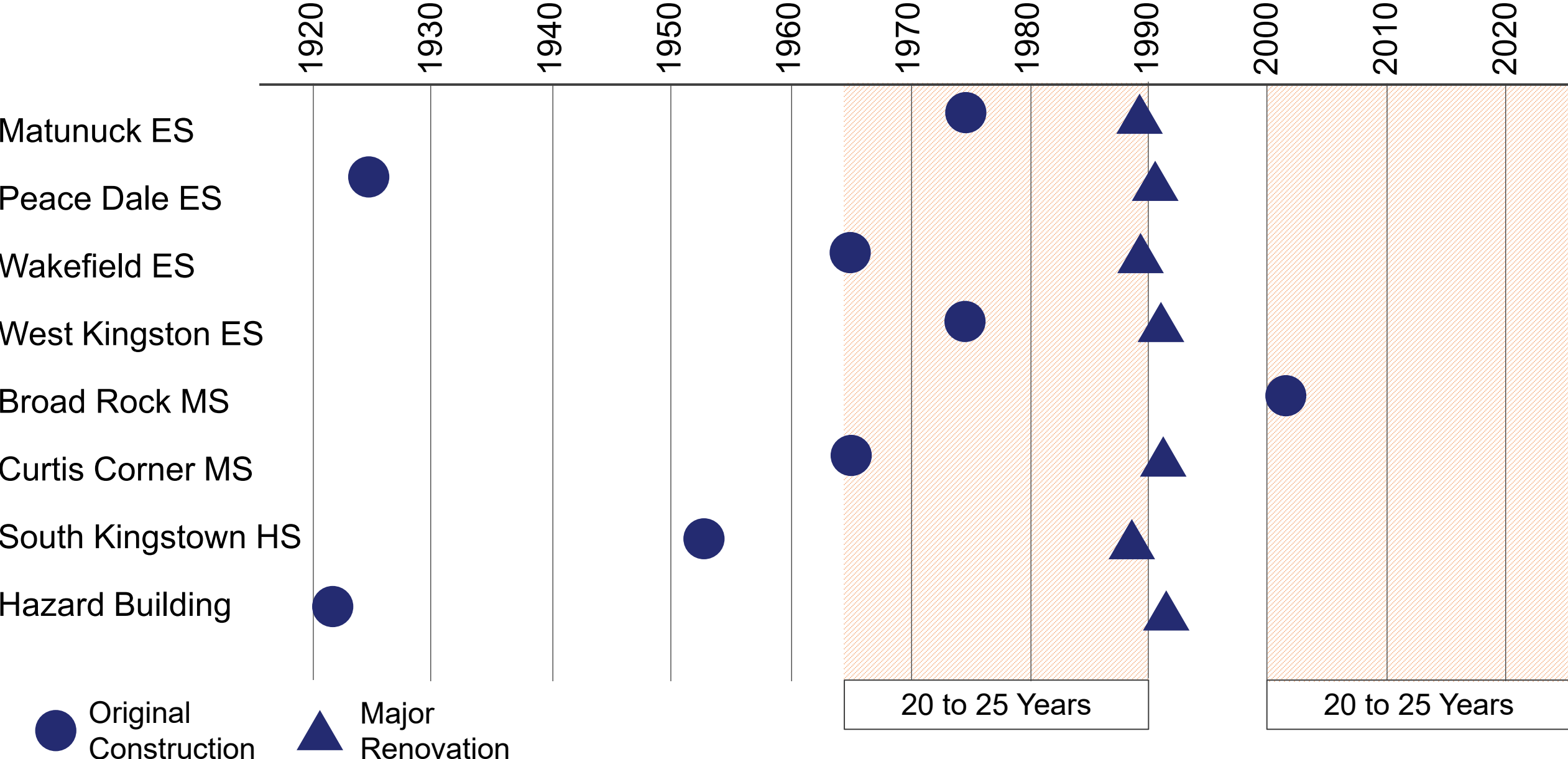
# Data Gathering

- Facility Guiding Principles

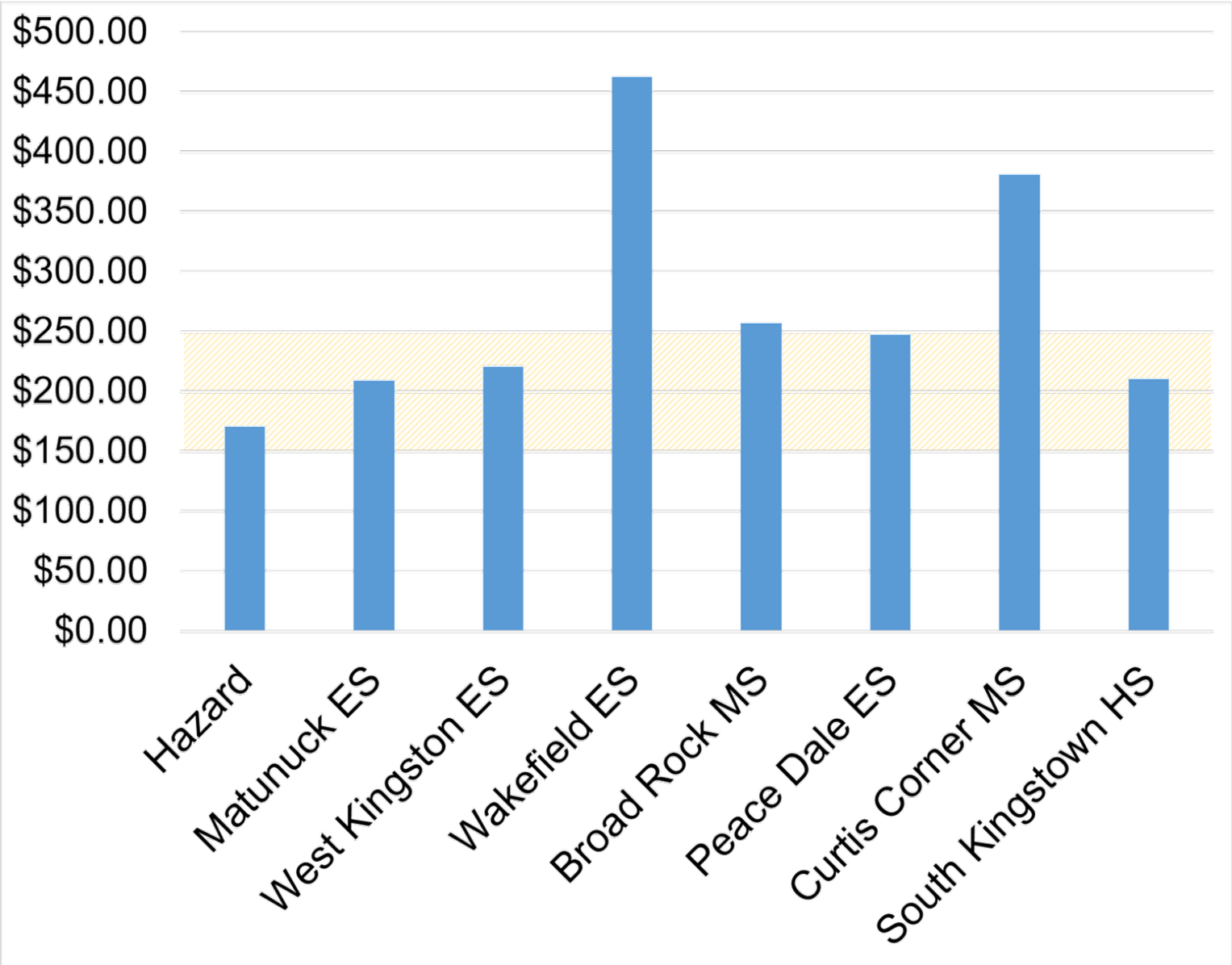
						
<b>Future Ready</b>	<b>Reflect Community Values</b>	<b>Equitable</b>	<b>Warm, Safe, &amp; Inviting</b>	<b>Sustainable</b>	<b>Small School Feel – Large School Pride</b>	<b>School as a Community Resource</b>
<b>1 Tie</b>	<b>4</b>	<b>1 Tie</b>	<b>2</b>	<b>5</b>	<b>3</b>	<b>6</b>

*“In this age of school choice SK can NOT compete with the updated, modern campuses of our surrounding communities, and we’re losing droves of students as a direct result.”*

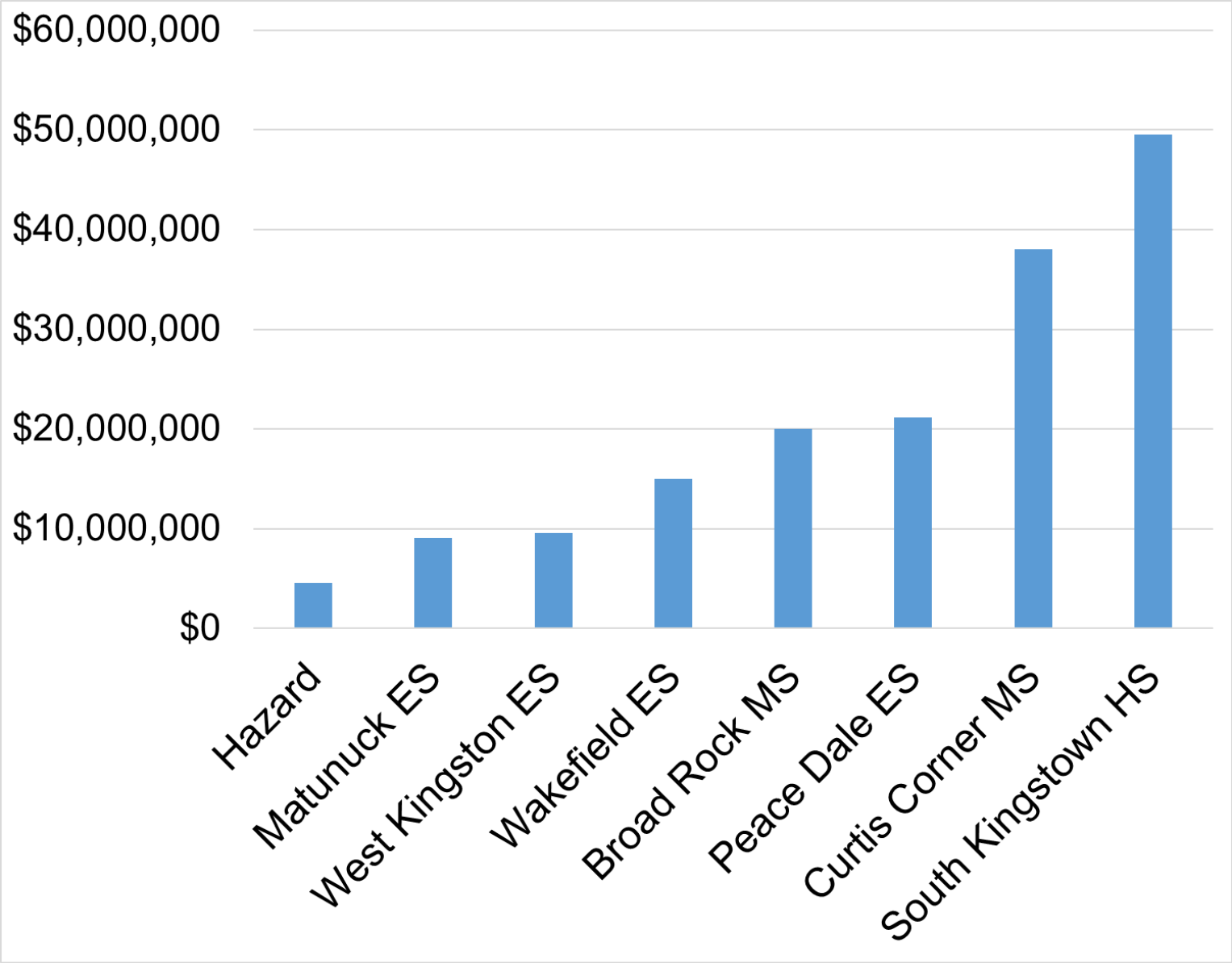
# Summary of Data - Timeline



# Summary of Data – Facility Needs by Sq.Ft.



# Summary of Data – Cost of Needs

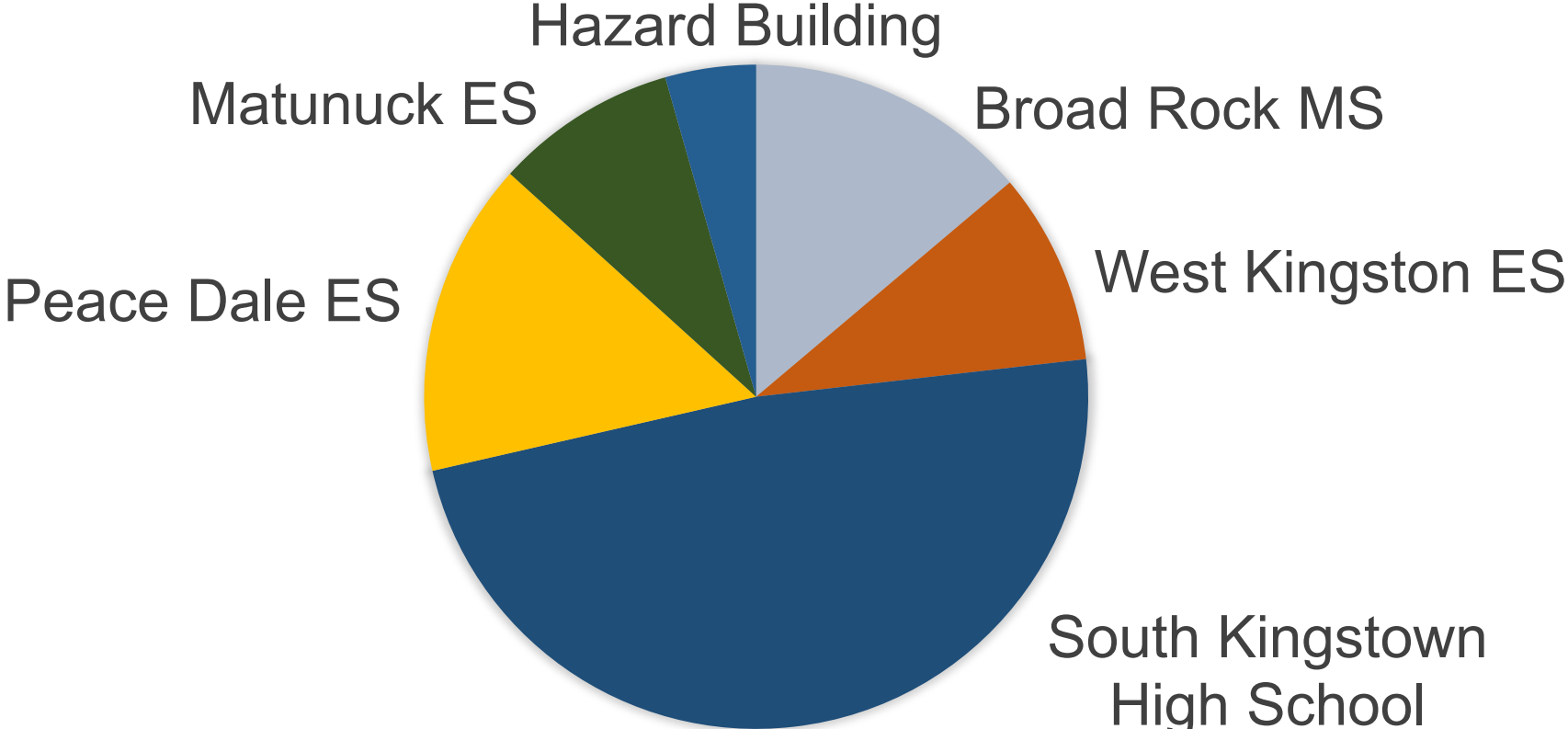


# Summary of Data – Facility Assessment

- 10 Year Forecast

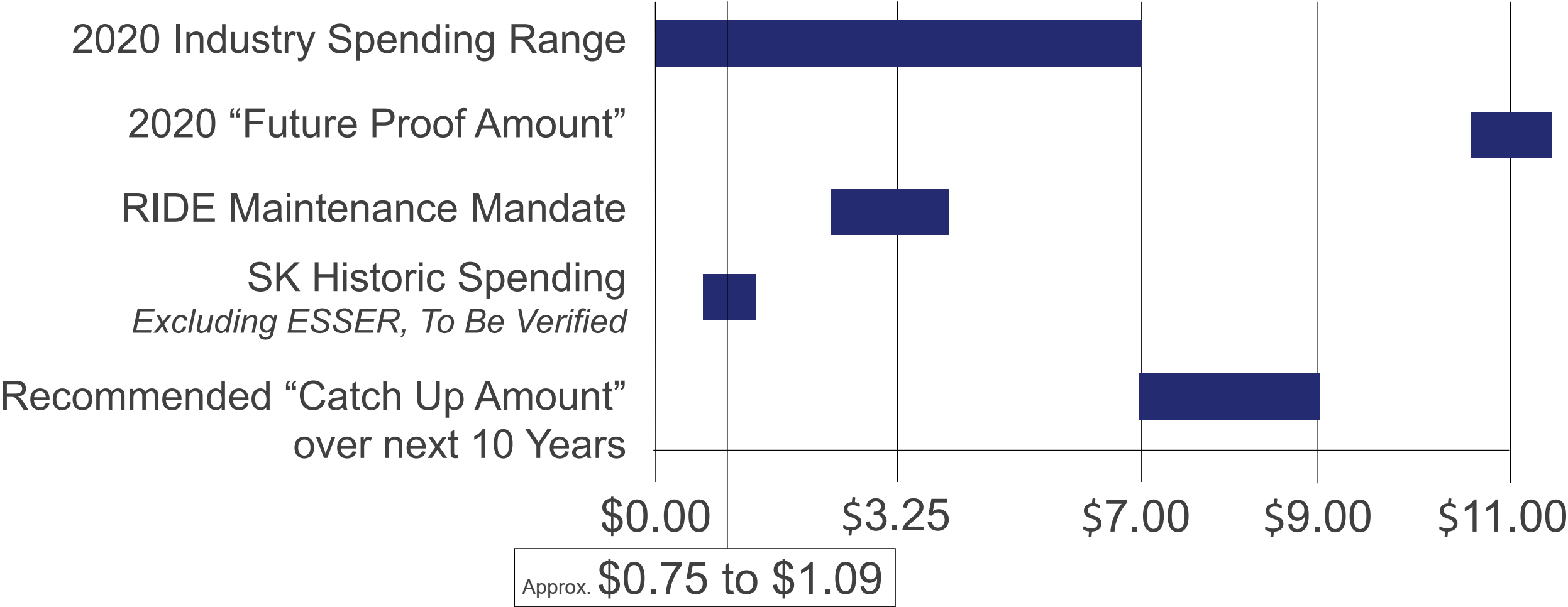
\$102.8 million

(Facility Condition Assessment with No Programmatic Improvements)



# Summary of Data – Annual Spending

Annual Dollars Per Sq.Ft. for  
Deferred Maintenance & Repair





# Trending Facility Needs

- Two Categories
  1. **Deferred Maintenance**
  2. **Student Centric**
    - Educational Adequacy & Equity
    - Support Program & Curriculum

*“I graduated from the school system over 30 years ago, and most of the facilities are still the same! Students should have access to clean, modern facilities which support their ability to learn and grow.”*

# Enrollment & Demographics

- Historic analysis indicates a steady decline in enrollment (2011 through 2021) *NESDEC*

**3,359** Students (2011)



**2,563** Students (2021)

*October 2021 actual enrollment 2,608 students*

- Projected analysis indicates a continuing decline in enrollment (2021 through 2031) *NESDEC*

**2,563** Students (2021)

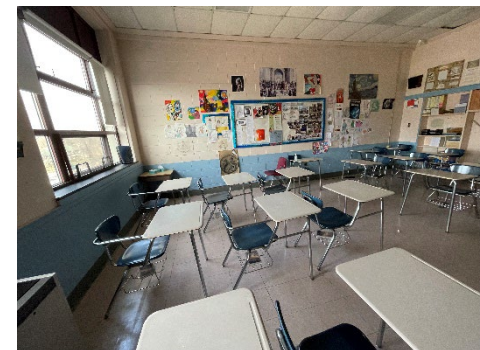
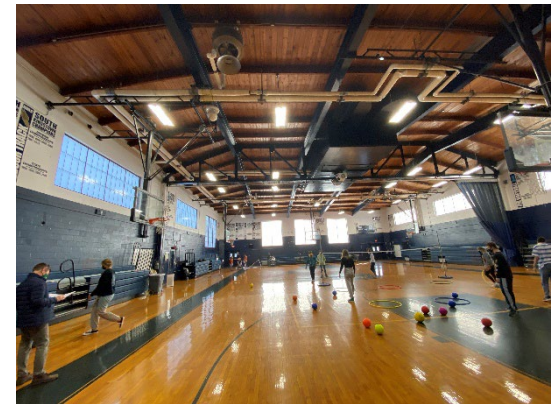
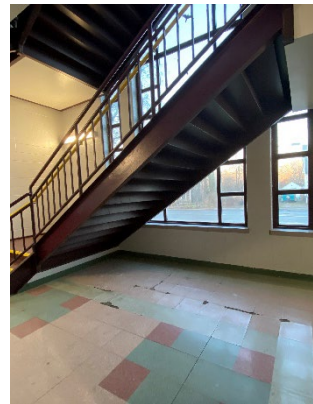
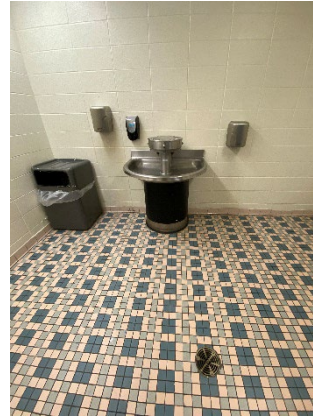


**2,182** Students (2031)

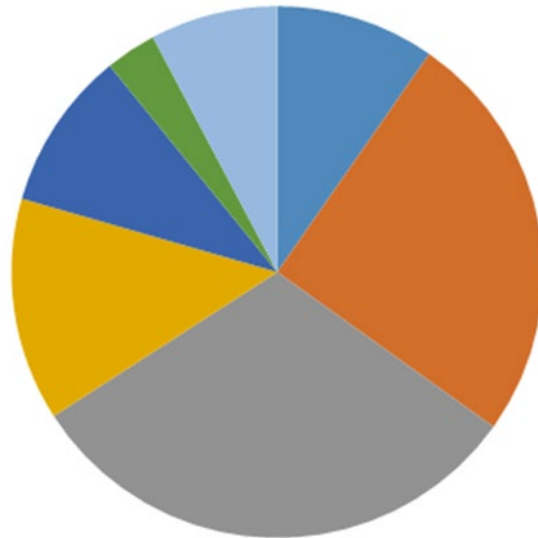
# SKHS – Deferred Maintenance Needs

**\$49.5** million

(10 Year Forecast - Facility Condition Assessment with No Programmatic Improvements)



- Building Envelope
- Interior Architecture
- Heating Ventilation
- Electrical
- Plumbing
- Fire Protection
- Site



# SKHS – Student Centric & Programmatic Needs

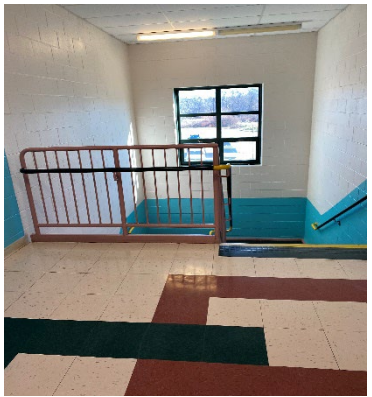
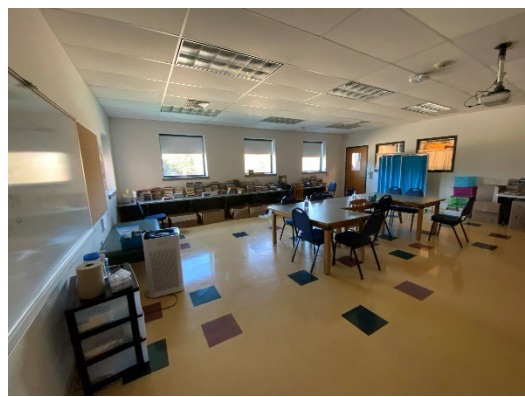
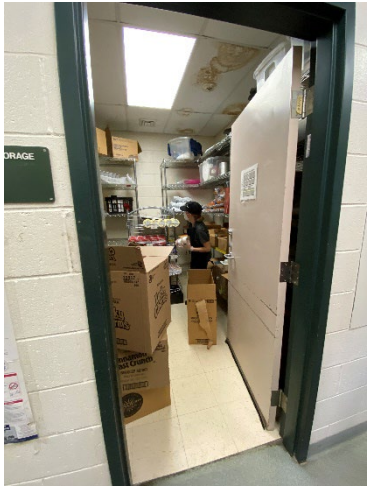
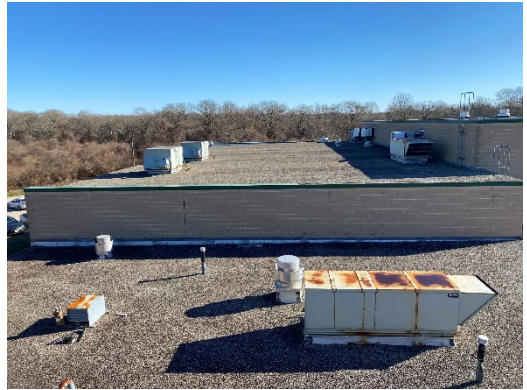
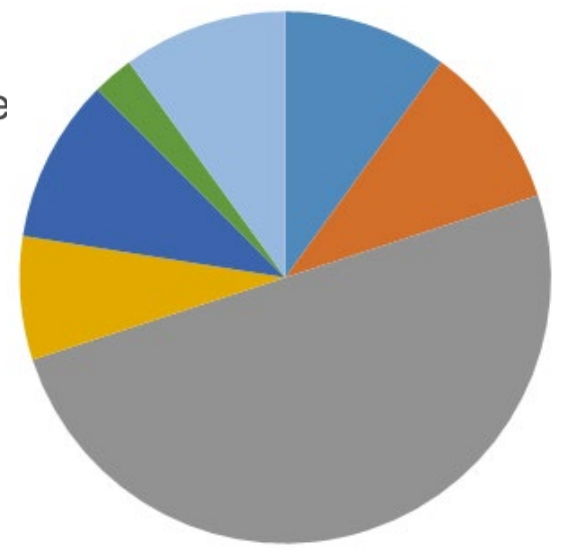
- Desire for expansion of CTE
- Existing layout is hard to supervise & control
- Desire centralization of administration, guidance & nurse
- Overall building needs modernization, incl. CTE, Science, Media Center
- Desire larger rooms for signature programs
- Make provisions for small group & collaboration spaces
- Provide flexible furniture & technology
- Develop & enhance central courtyard
- Consider demolition & replacement of classrooms, gyms, CTE areas
- Exterior & interior aesthetic upgrades needed
- Enhance athletic fields

# Broad Rock MS – Deferred Maintenance Needs

**\$14.2** million

(10 Year Forecast - Facility Condition Assessment with No Programmatic Improvements)

- Building Envelope
- Interior Architecture
- Heating Ventilation
- Electrical
- Plumbing
- Fire Protection
- Site



# Broad Rock MS – Student Centric & Programmatic Needs

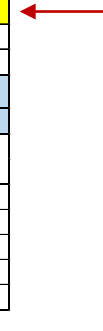
- Provide flexible furniture & technology
- Make provisions for small group & collaboration spaces
- Upgrade the Media Center
- Minimal Interior Modifications necessary to Support Grades 6 thru 8
- Capacity Analysis Does Not Suggest an Addition is needed

NESDEC ENROLLMENT PROJECTIONS BROAD ROCK MIDDLE SCHOOL				
SCHOOL YEAR	GRADE			TOTAL
	6	7	8	
2023-24	191	175	193	559
2024-25	206	185	173	564
2025-26	187	200	183	570
2026-27	164	181	198	543
2027-28	167	159	179	505

NUMBER OF CLASSROOMS NEEDED				
Classroom Size Factor = 25				
SCHOOL YEAR	GRADE			TOTAL
	6	7	8	
2023-24	8	7	8	22
2024-25	8	7	7	23
2025-26	7	8	7	23
2026-27	7	7	8	22
2027-28	7	6	7	20

BROAD ROCK MIDDLE SCHOOL (6-8) CAPACITY ANALYSIS			
Program Description	Room #	Capacity	Note
Classroom	1	25	
Classroom	2	25	
Classroom	3	25	
Classroom	4	25	
Classroom	5	25	
Classroom	6	25	
Classroom	7	25	
Classroom	8	25	
Classroom	9	25	
Classroom	10	25	
Classroom	11	25	
Classroom	12	25	
Classroom	13	25	
Classroom	14	25	
Classroom	15	25	
Classroom	17	25	
Classroom	18	25	
Classroom	19	25	
Classroom	20	25	
Classroom	21	25	
Classroom	22	25	
Classroom	25	25	
<hr/>			
Special Education Classroom	16	12	Full Size CR
SE Pull-Out/Small Group	31	0	
SE Pull-Out/Small Group	32	0	
SE Pull-Out/Small Group	33	0	
SE Pull-Out/Small Group	36	0	
SE Pull-Out/Small Group	41	0	
OT/PT	30	0	Full Size CR
<hr/>			
Gymnasium	Gym	0	
Science Classroom	23	25	
Science Classroom	24	25	
Science Lab	37	25	
Science Lab	38	25	
Science Lab	39	25	
Science Lab	40	25	
Robotics Lab	29	0	
<hr/>			
Art Room	34	0	
Art Room	35	0	
Music Room	26	0	
Music Room	27	0	
Music Room	28	0	
<hr/>			
SUB-TOTAL CAPACITY		42	712
<hr/>			
UTILIZATION DEDUCTION	20%	142	
<hr/>			
NET CAPACITY		570	

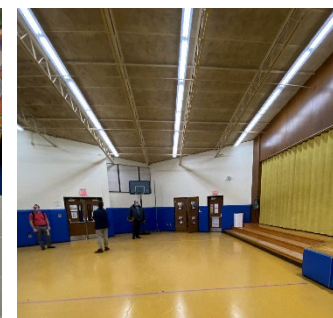
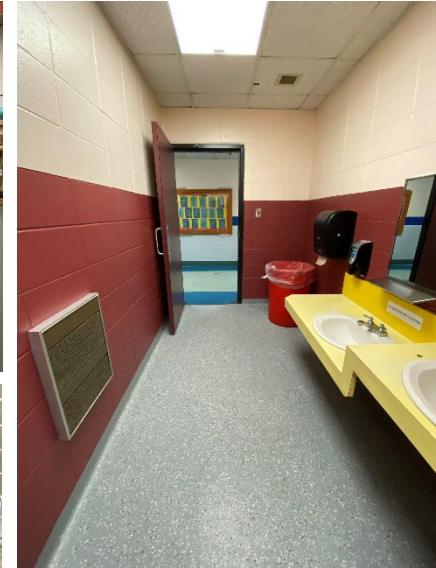
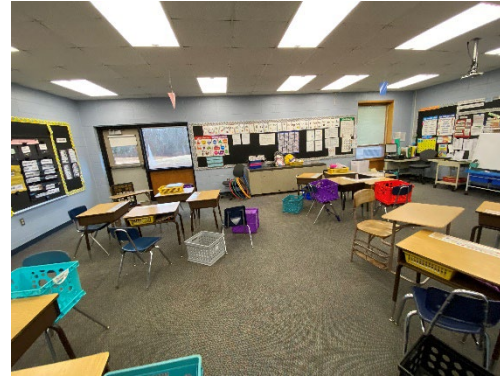
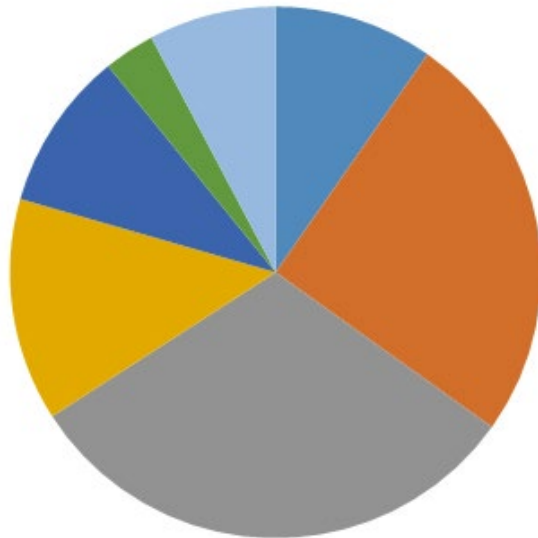


# West Kingston ES – Deferred Maintenance Needs

**\$9.6** million

(10 Year Forecast - Facility Condition Assessment with No Programmatic Improvements)

- Building Envelope
- Interior Architecture
- Heating Ventilation
- Electrical
- Plumbing
- Fire Protection
- Site



# West Kingston ES – Student Centric & Programmatic Needs

- Overall building needs modernization, including the Media Center
- Make provisions for small group & collaboration spaces
- Provide flexible furniture & technology
- Provide additional classroom electric capacity
- Consider adding new gymnasium space
- Exterior & interior aesthetic upgrades needed

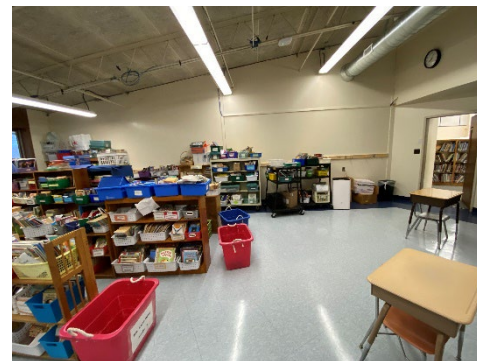
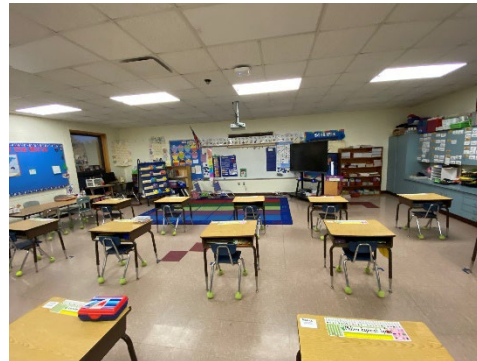
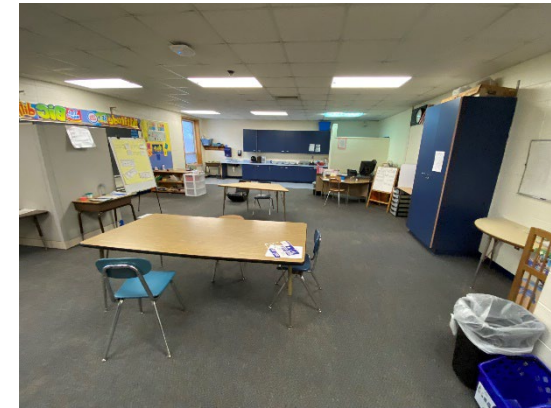
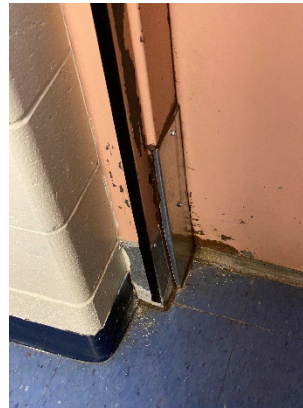
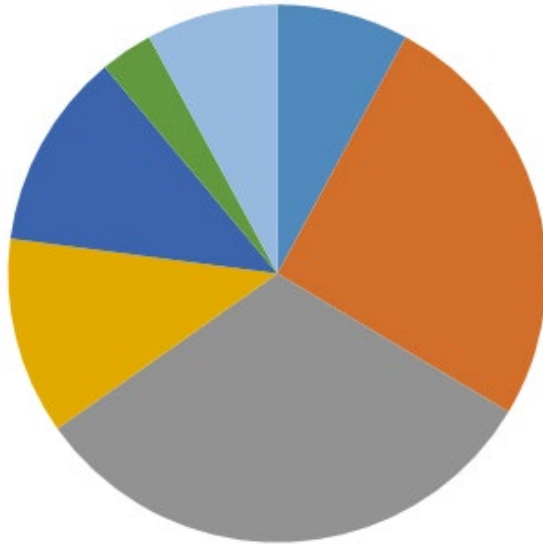


# Matunuk ES – Deferred Maintenance Needs

**\$9.1** million

(10 Year Forecast - Facility Condition Assessment with No Programmatic Improvements)

- Building Envelope
- Interior Architecture
- Heating Ventilation
- Electrical
- Plumbing
- Fire Protection
- Site



# Matunuck ES – Student Centric & Programmatic Needs

- Overall building needs modernization, including the Media Center
- Make provisions for small group & collaboration spaces
- Provide flexible furniture & technology
- Provide additional classroom electric capacity
- Consider adding new gymnasium space
- Exterior & interior aesthetic upgrades needed

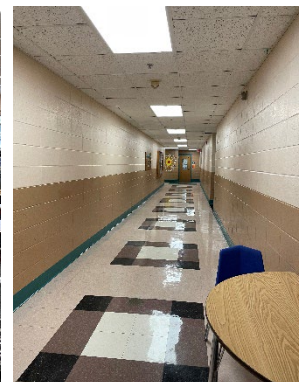
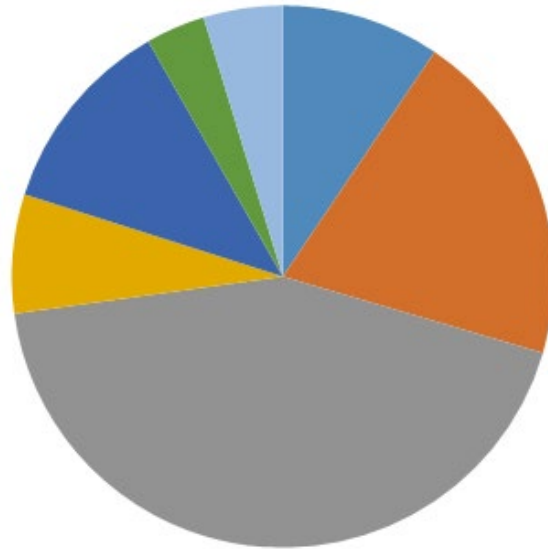
# Peace Dale ES – Deferred Maintenance Needs

**\$15.7** million

(10 Year Forecast - Facility Condition Assessment with No Programmatic Improvements)



- Building Envelope
- Interior Architecture
- Heating Ventilation
- Electrical
- Plumbing
- Fire Protection
- Site



# Peace Dale ES – Student Centric & Programmatic Needs

- Overall building needs modernization, including the Media Center
- Make provisions for small group & collaboration spaces
- Provide flexible furniture & technology
- Provide additional classroom electric capacity
- Exterior & interior aesthetic upgrades needed

# RIDE Stage I Submission

- Required for Housing Aid Reimbursement
- Stage I “the Need” (September 15<sup>th</sup> Submission)
  - **Identifies Facility Needs**
  - **Not** a commitment to a particular Project
  - **Not** a commitment to Bond

## *Corrections, Edits, and Additional Content:*

- 1. Section 10 Exhibit 2 - indicated North Kingstown not South Kingstown - “Corrected” pg. 199 of 1,674*
- 2. Executive summary indicated elementary schools remaining at K-4 and the middle school 5-8 – “Corrected” pg. 4 of 1,674*
- 3. Select misspellings and sentence structure – “Corrected and Reworded”*
- 4. Enhanced select graphic quality*

# Next Steps

- Develop the Solution through the Stage II

Project Scope

Project Size

Facility &  
Programmatic  
Needs



Funding Limits &  
Debt Ceilings

Logistical  
Constraints

Other School &  
Town Needs

Responsible Innovation

# Next Steps

- Stage II process will include
  - Robust Communication
  - Community Participation
  - Early & Frequent Engagement Opportunities

*“Please help us deliver modern facilities at an affordable cost, sustainable architecture, spaces that allow our children to be creative, warm colors, an environment we can feel proud of. We have great teachers and families, we need our schools to reflect that.”*

# Questions