



South Kingstown School District

School Building Committee Update
October 6, 2022

Agenda

Option Focus – High School

CTE

Performing Arts / Auditorium

Physical Education / Athletics

Design Prompt for Discussion

Option Matrix

Next Steps

CTE

Programs

Allied Health CAN & EMT

Construction Technology

PLTW Biomedical Science

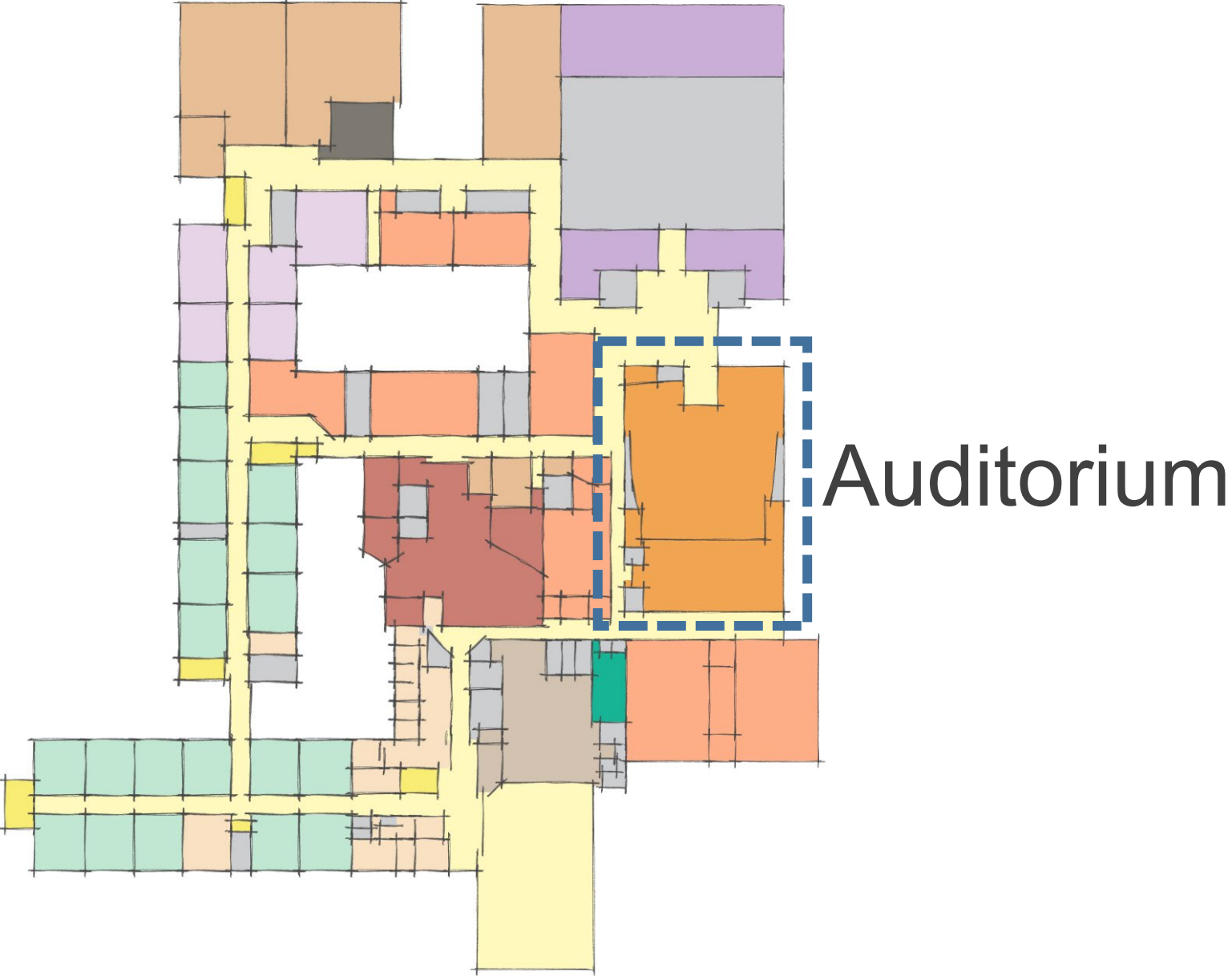
PLTW/URI Computer Science

Studio ART Craft & Designer

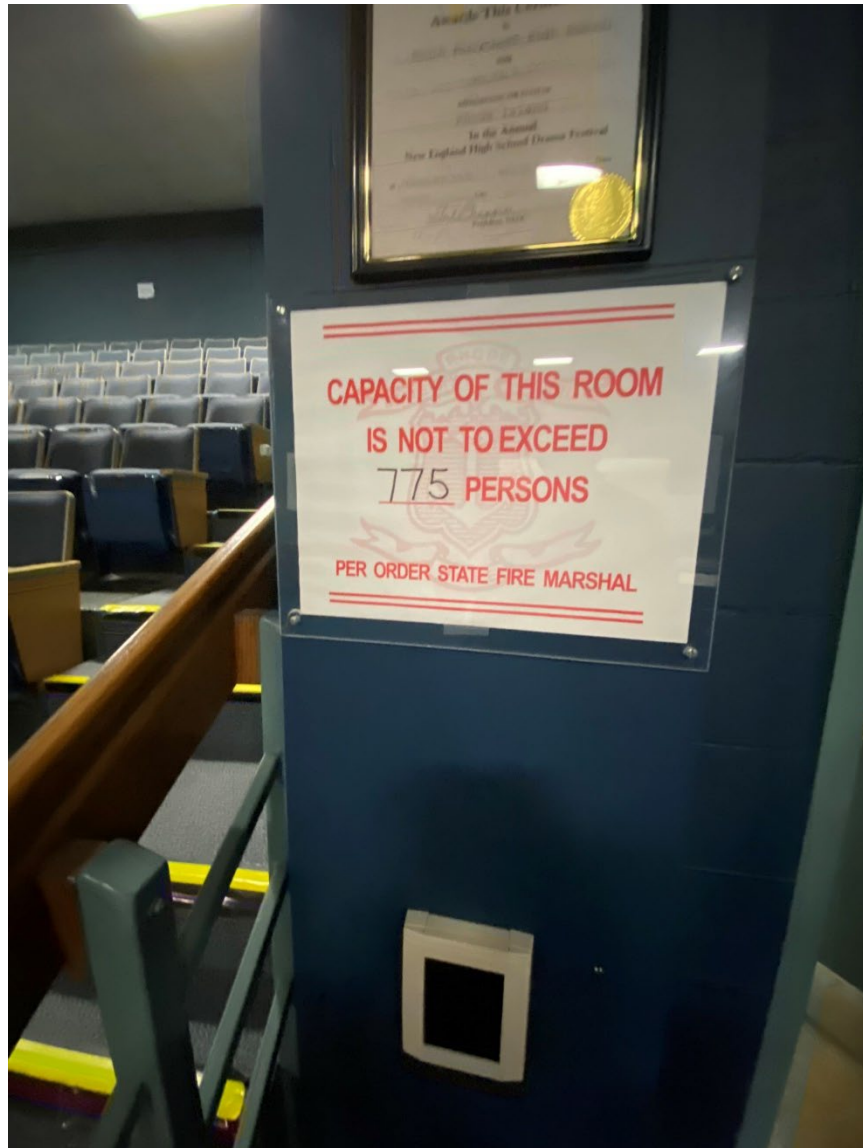
Next Steps

In-depth conversation with Instructors

Performing Arts / Auditorium



Performing Arts / Auditorium



Performing Arts / Auditorium



Performing Arts / Auditorium



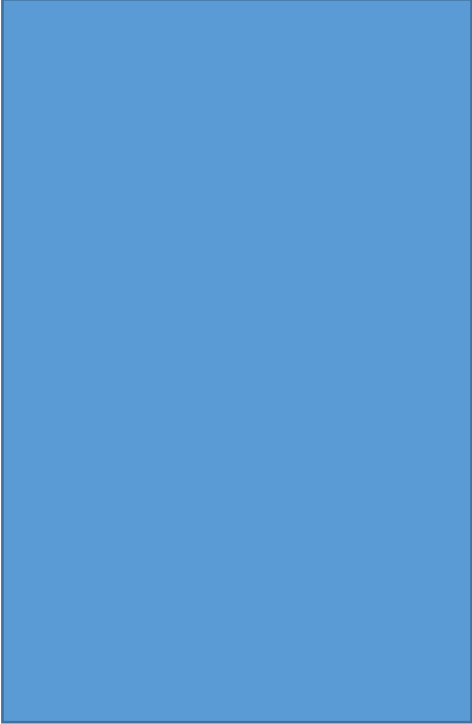
Performing Arts / Auditorium



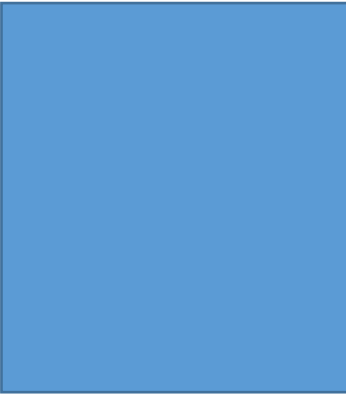
Performing Arts / Auditorium



Performing Arts / Auditorium

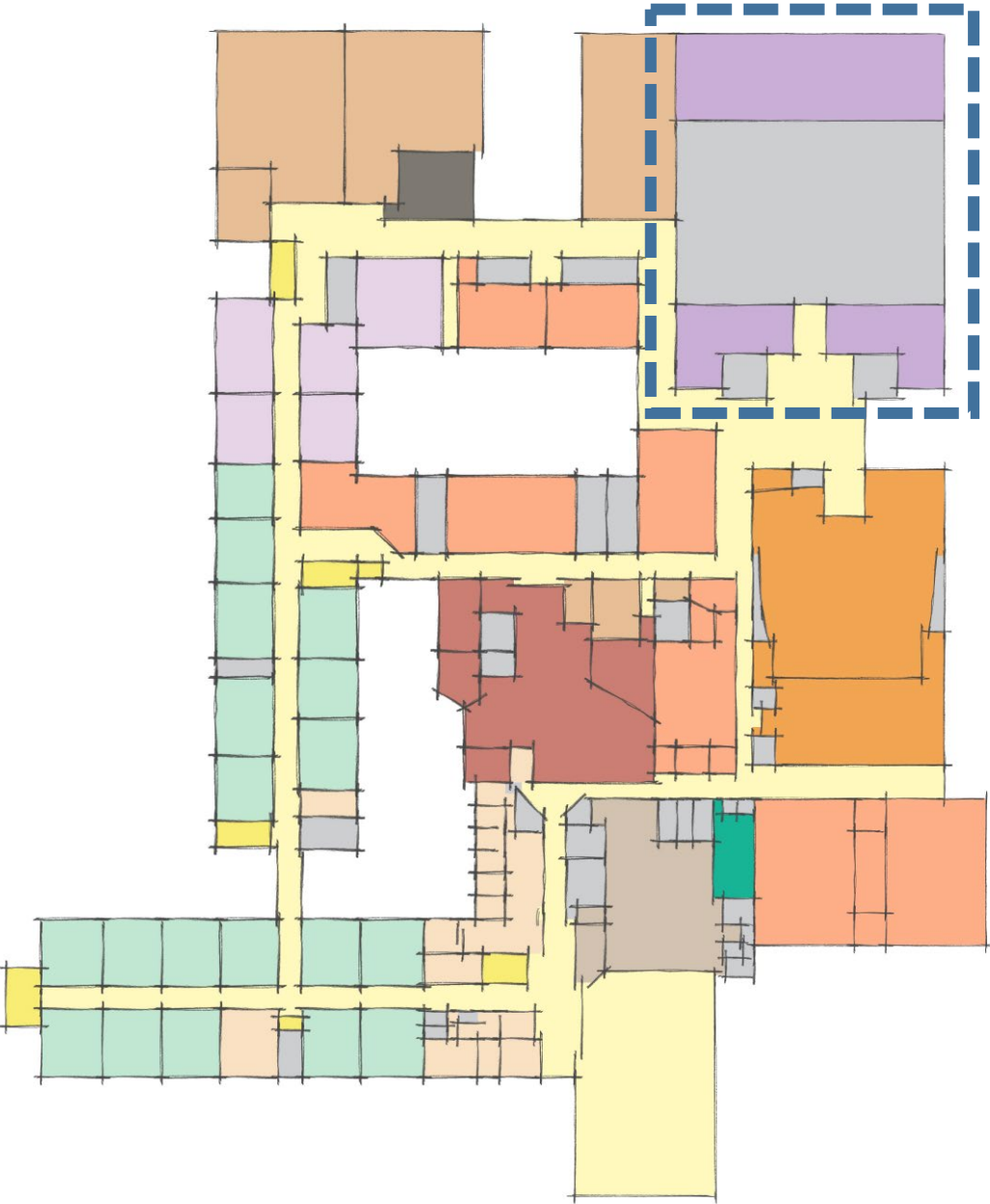


Existing Size



Permitted by RIDE

Physical Education / Athletics



Gymnasium

Physical Education / Athletics



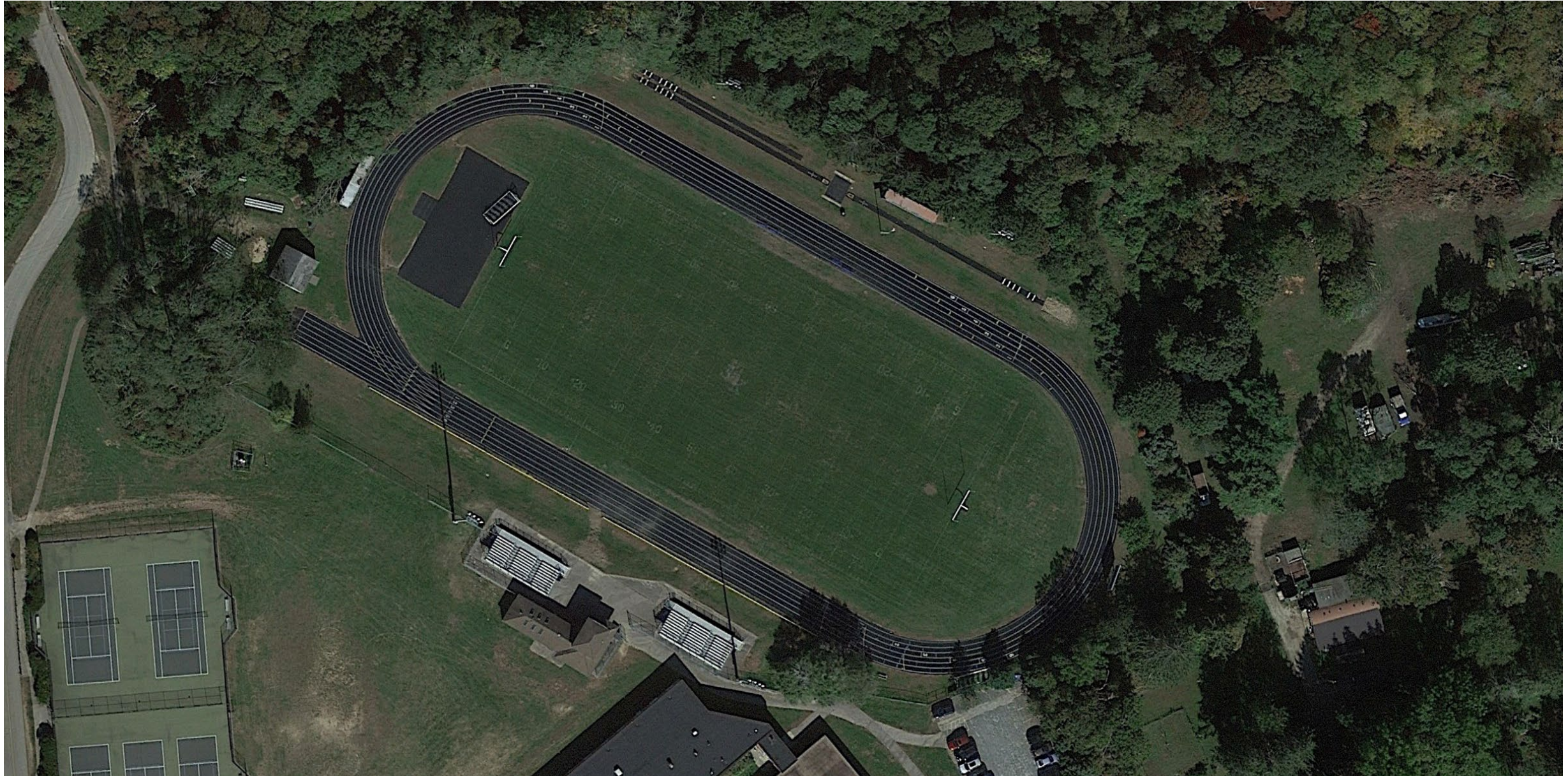
Physical Education / Athletics



Physical Education / Athletics



Physical Education / Athletics



Physical Education / Athletics



Physical Education / Athletics



Design Prompt for Discussion

Preliminary concept

Based on our experience & expertise

Intended for discussion only

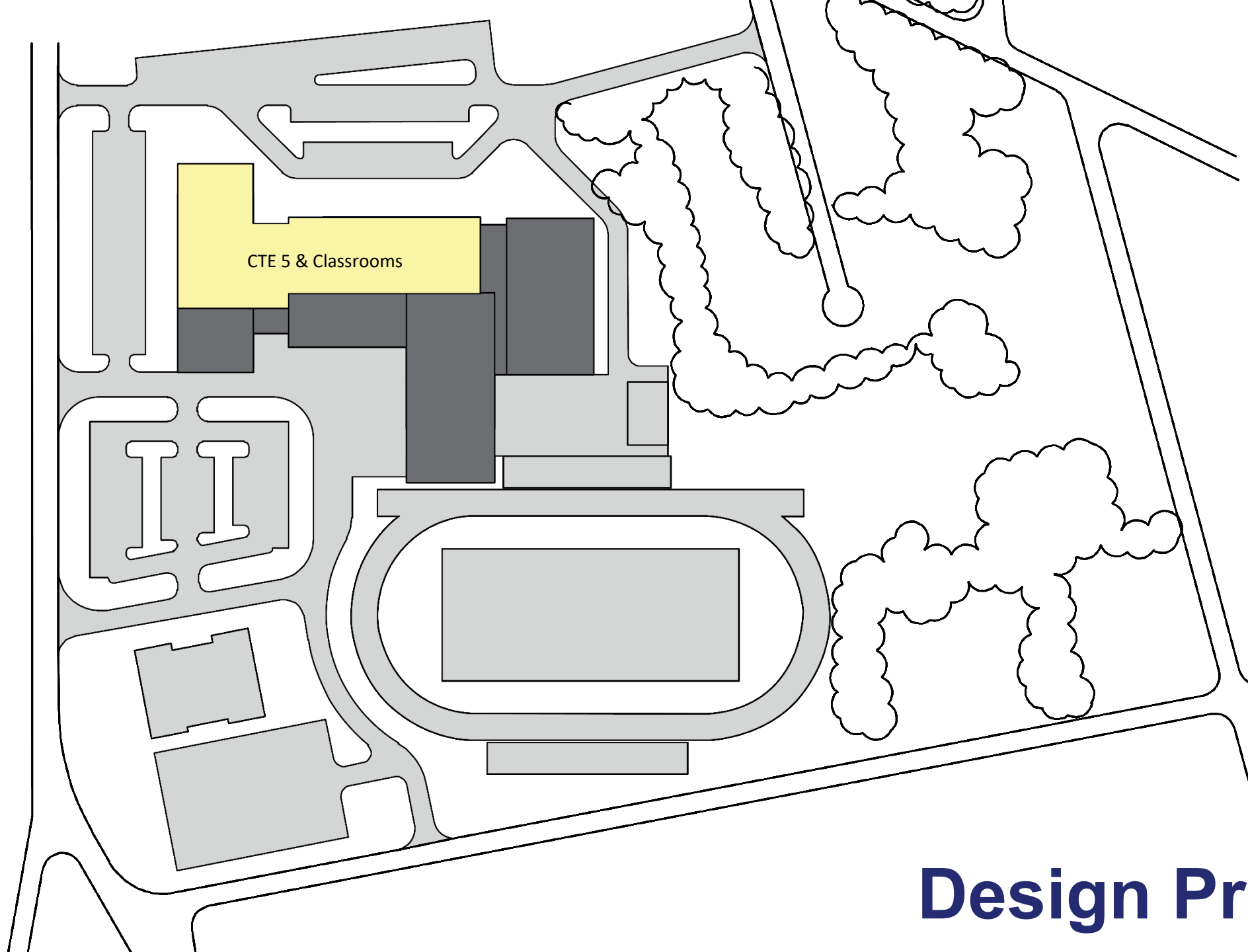
On existing site

An aerial photograph of a school campus. The image shows several large, light-colored buildings, a large green field, and numerous parking lots filled with cars. The area is surrounded by residential houses and dense green trees. Three white text boxes with blue text are overlaid on the image to identify key locations.

SK High School

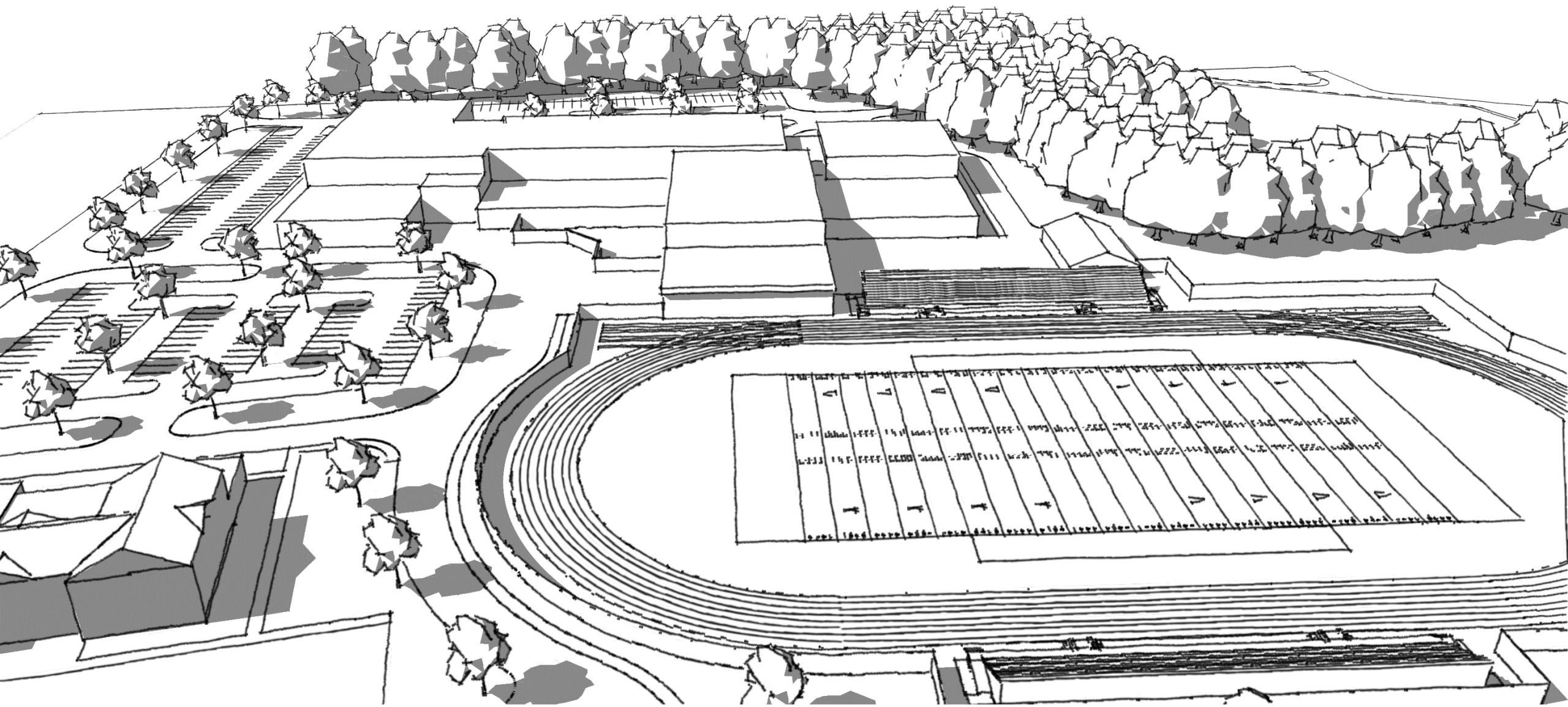
Hazard Field

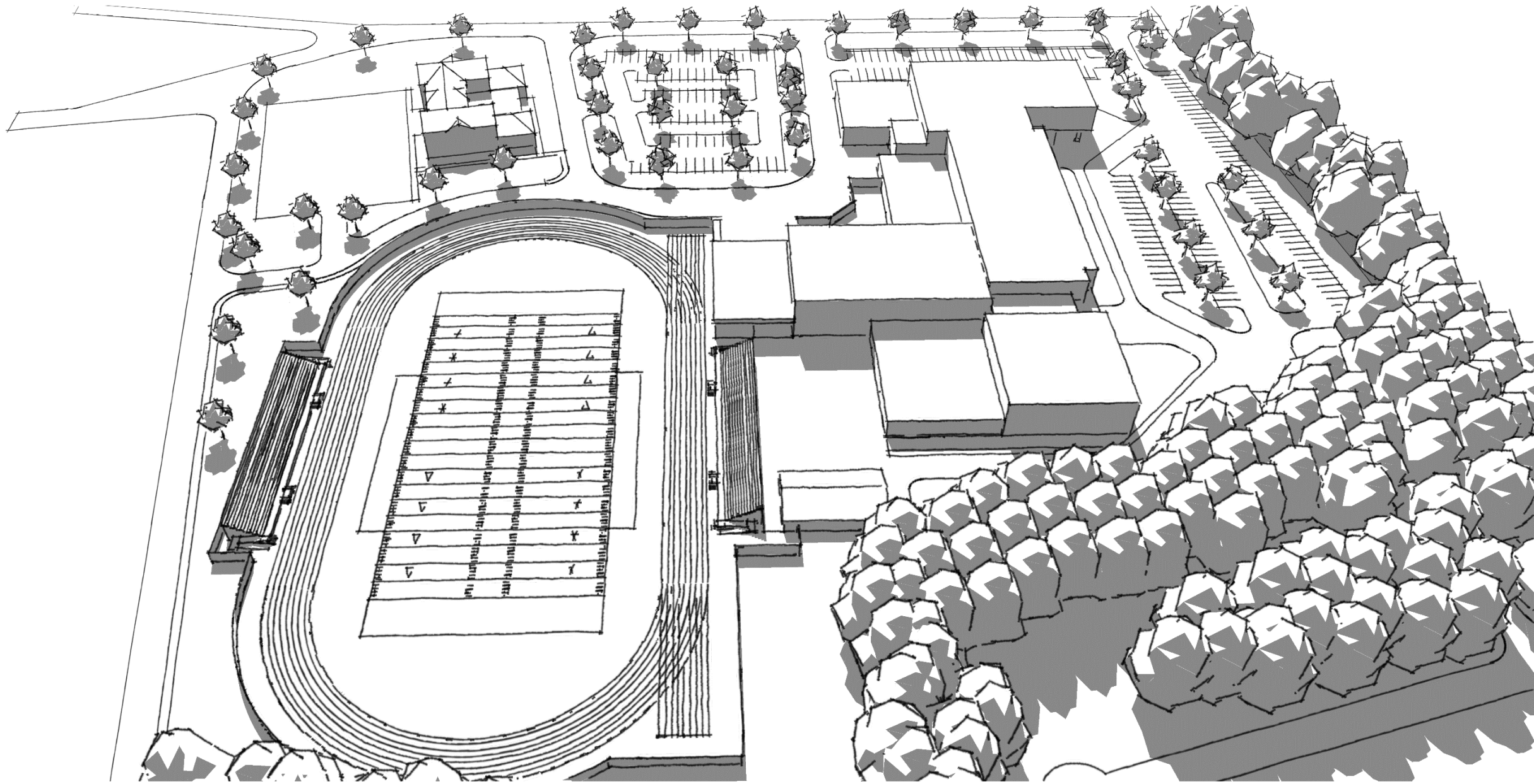
Hazard Building

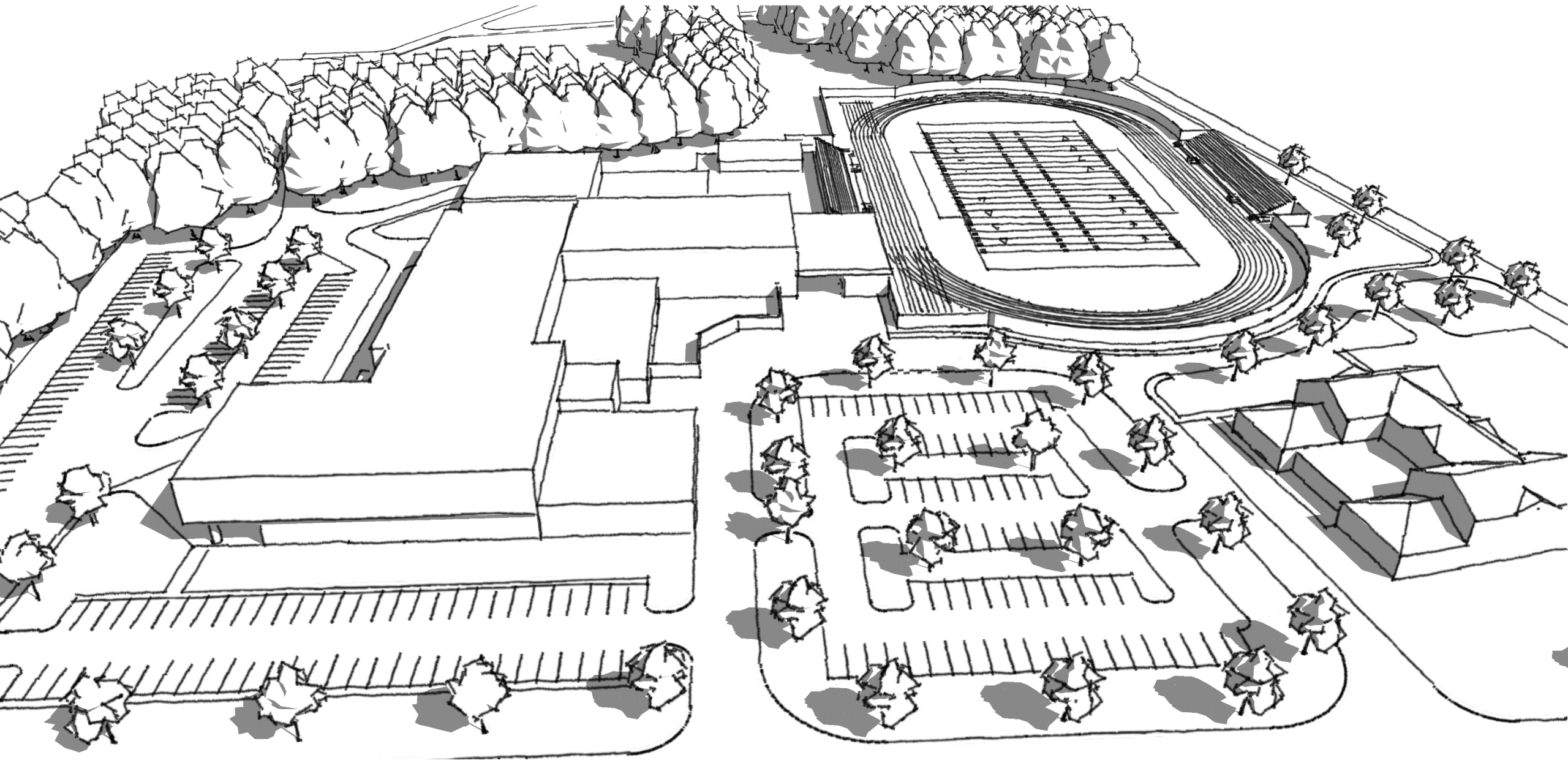


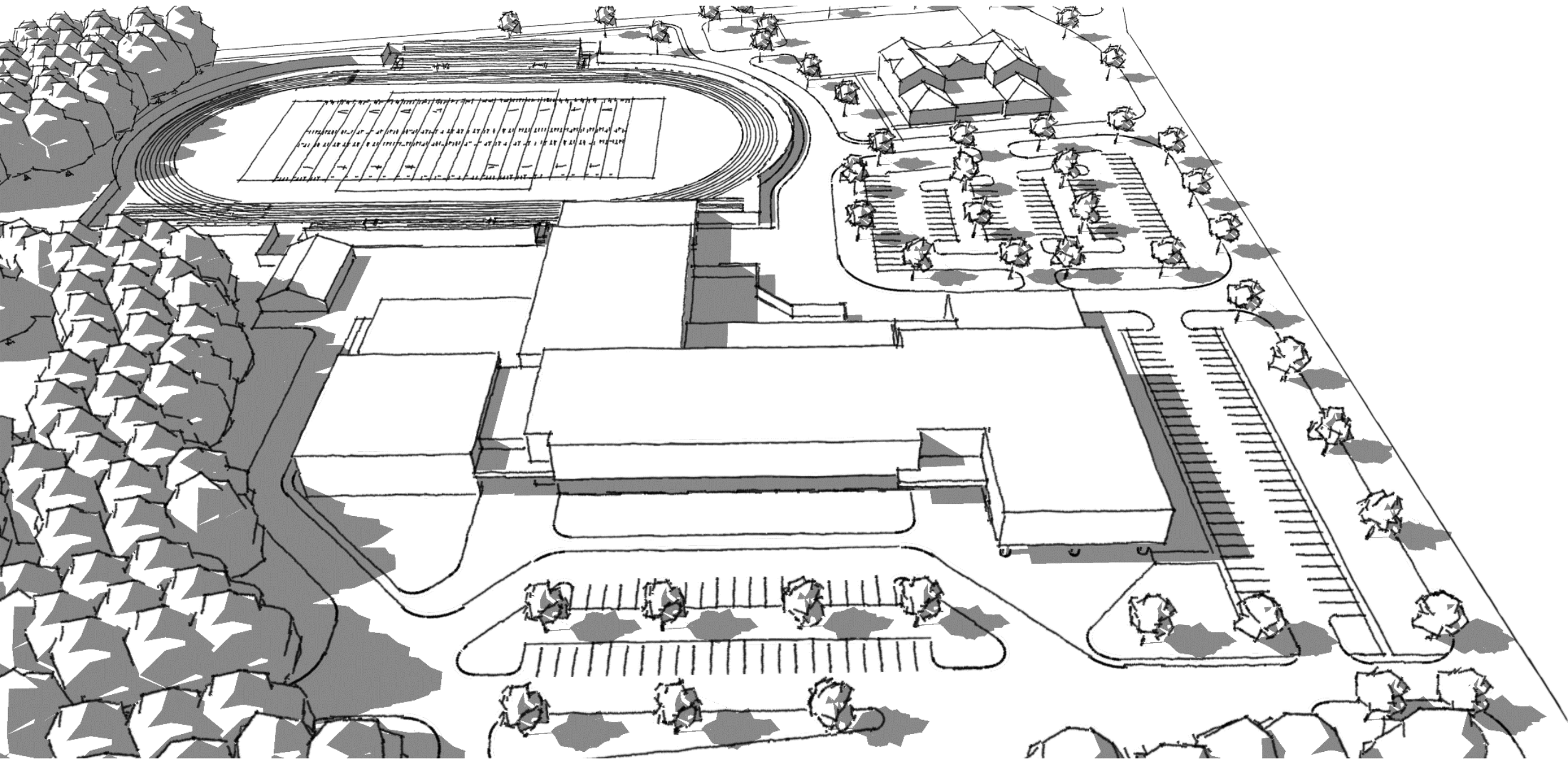
CTE 5 & Classrooms

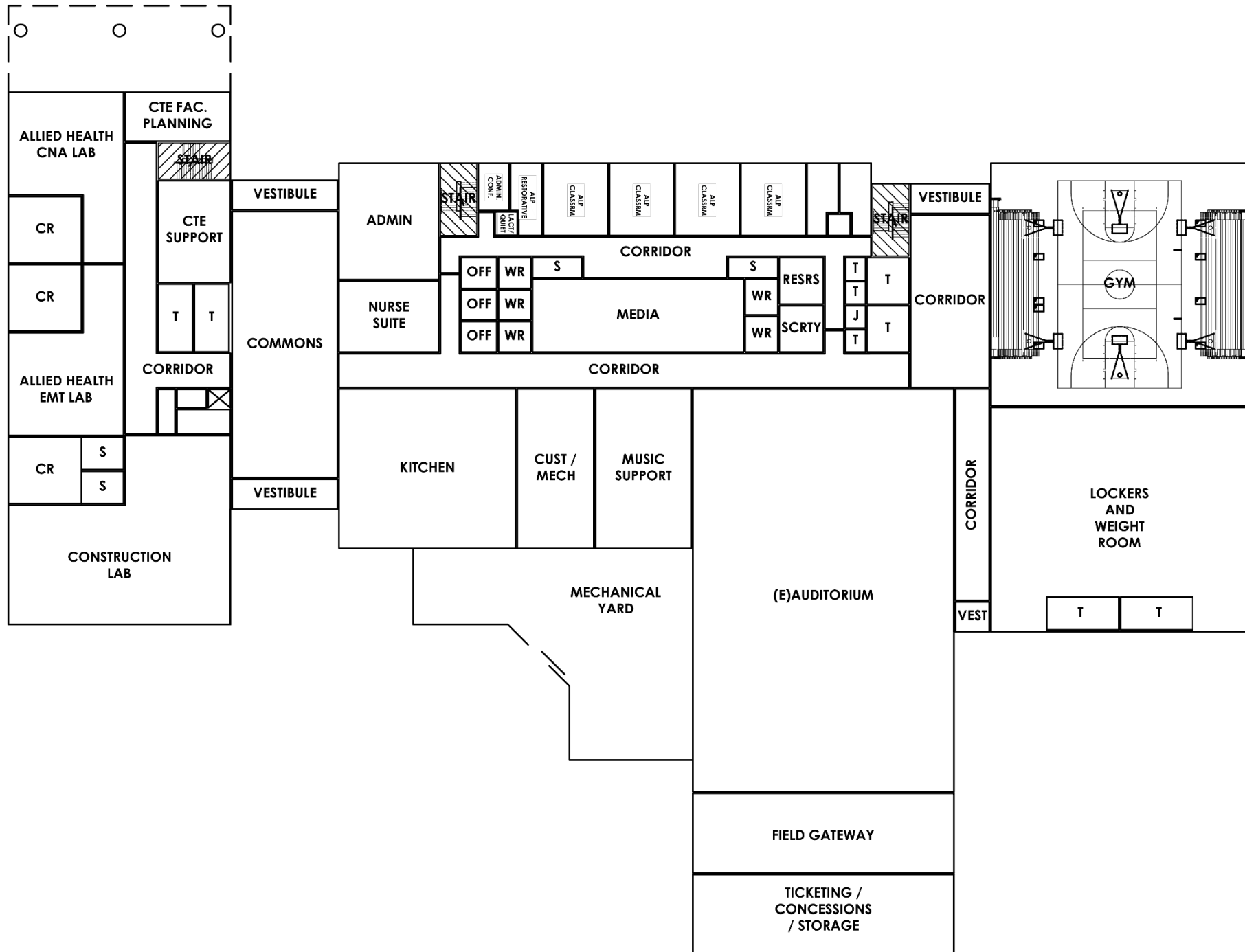
Design Prompt

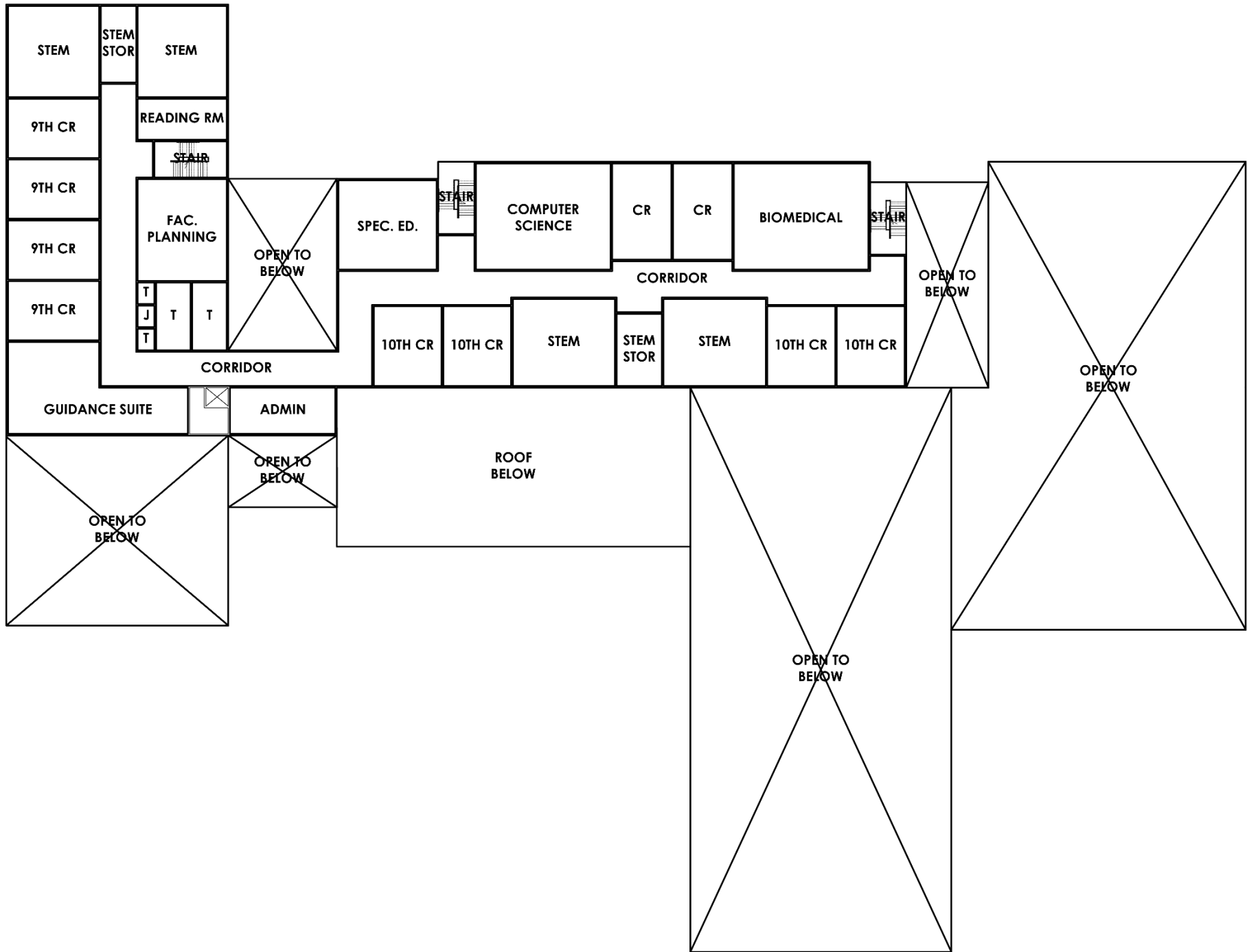


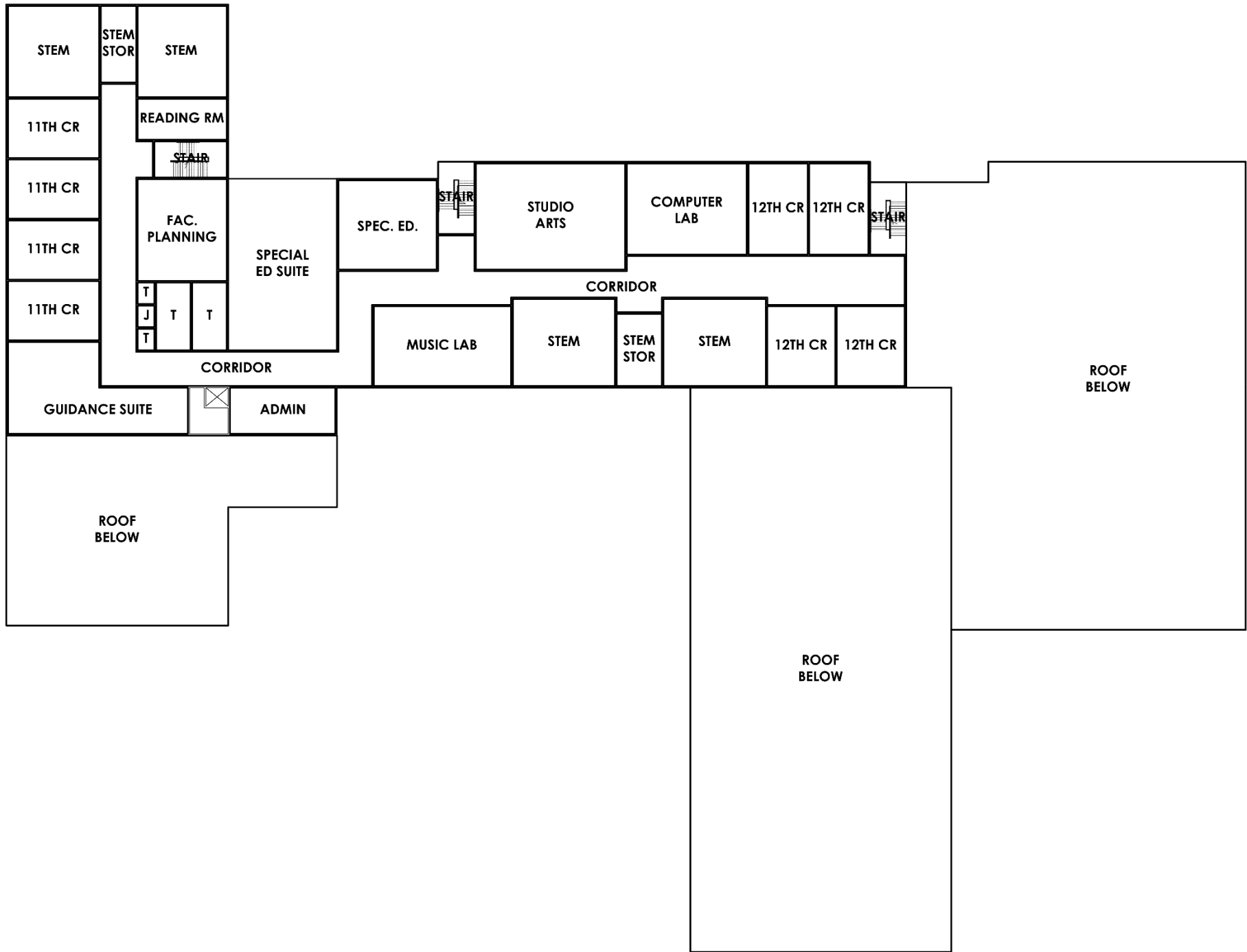












Option Matrix - Good

- New HS on existing site w/ existing Auditorium
- Maintenance Improvements at Western
- Maintenance Improvements at Matunuck
- Maintenance Improvements at Peacedale
- Maintenance Improvements at Broad Rock
- Renovations to Hazard

Option Matrix - Better

- New HS on existing site w/ existing Auditorium
- Renovations at Western
- Renovations at Matunuck
- Renovations at Peacedale
- Renovations at Broad Rock
- Renovations to Hazard

Option Matrix - Best

- New HS on existing site w/ existing Auditorium
- Gym Additions & Renovations at Western
- Gym Additions & Renovations & Matunuck
- Renovations at Peacedale
- Renovations at Broad Rock
- Renovations to Hazard

Option Matrix - Costs

Based on current estimates from similar projects*

Option – Good @ \$145 to 150 million (Project Cost)

Option – Better @ \$155 to \$160 million (Project Cost)

Option – Best @ \$165 to \$170 million (Project Cost)

** New Construction Costs Range @ \$623 - \$639/sq.ft.
Renovation Costs Range @ \$519 - \$852 Avg. \$656/sq.ft.*

Next Steps

- Continued dialogue with High School Administrators
- Continued discussions with SK Facilities regarding deferred maintenance
- Explore other High School options
- Explore ES / MS options